

ASIA/PACIFIC REGION ATS ROUTE CATALOGUE



INTERNATIONAL CIVIL AVIATION ORGANIZATION
ASIA/PACIFIC REGIONAL OFFICE

VERSION ~~13~~-14

Sep ~~2014~~ 2015

Table of Contents

Table of Contents	i
Foreword	iii
Amendment to BANP and Catalogue	v
Amendment Record	viii
Chapter A: Routes in BANP	1
Chapter 1: Route Requirements Users and States (South Asia)	23
Chapter 2: Route Requirements Users and States (Southeast Asia)	35
Chapter 3: Route Requirements Users and States (East Asia/Russian Federation)	56
Chapter 4: Route Requirements Users and States (Pacific)	96

Foreword

The *Air Navigation Plan – Asia and Pacific Regions* (Doc 9673), Volume I, Basic ANP (BANP) contains ATS route requirements which were developed by the Third Asia and Pacific Regional Air Navigation Meeting (Bangkok, May 1993). The requirements have been revised from time to time to reflect current operational needs. There is also an ongoing need to revise and update these requirements.

The fourteenth meeting of the ASIA/PAC Air Navigation Planning and Implementation Regional Group (APANPIRG/14, August 2004) under Conclusion 14/5 established the ATS Route Network Review Task Force (ARNR/TF) to review the Asia and Pacific ATS route network as contained in the BANP, determine present and future route requirements, and revise the BANP as appropriate. To facilitate the amendment process and keep track of route implementation and future requirements, and with the objective of providing more up to date information on route developments, ARNR/TF prepared the draft *Asia/Pacific ATS Route Catalogue* as a supplement to the BANP.

APANPIRG/16 (August 2005, Bangkok), recognizing the value of a consolidated reference document for the regional ATS routes and future route requirements of States and airspace users, accepted the Route Catalogue under Decision 16/9. The Route Catalogue is intended to be a living document, supplementing the BANP and maintained by ICAO Asia and Pacific Office. Communication in relation to the Route Catalogue should be made via email to the ICAO Asia and Pacific Office at icao_apac@bangkok.icao.int.

A Contracting State or qualifying international organization identifying a need for a new route requirement to be included in the BANP or to change an existing route contained in the BANP, may submit an amendment proposal to the Secretary General for approval by the President of the Council in accordance with established procedures summarized below.

Appropriately presented and documented proposals to amend the BANP are submitted to the ICAO Secretary General through the Regional Office and circulated to States and International Organizations for comment. Once all parties concerned agree to the proposal, the Secretary General will submit the proposal to the President of the Council for approval. The Regional Office will inform States and international organizations concerned of the approval and the BANP will be amended accordingly.

The Regional Office, which is responsible for maintaining the ATS Route Catalogue, will update the Route Catalogue from time to time as amendment proposals are presented, progressed and agreed or not agreed. The revision number and date shown on the cover page of the catalogue, which is posted on the ICAO APAC website (<http://www.bangkok.icao.int/>).

The Reformatted ATS Route Catalogue is now revised as follows:

Chapter A: — Routes in BANP

Chapter 1, 2, 3 and 4: Future Requirements – Users & States

~~Chapter A lists ATS routes which have been contained in the BANP. Chapter A will be amended by the Regional Office subsequent to approval of an amendment to the BANP by the President of the Council. It is expected that Chapter A will become redundant when the electronic ANP (e ANP) formats become available in 2013.~~

~~*Note: — As the ATS Route Catalogue Chapter A is intended for use as a supplement to the BANP, it does not replace the BANP nor should it be used as an operational document. Its primary purpose is to assist States and airspace users by providing more up to date information, to develop and maintain the ATS routes in the Asia and Pacific Region.*~~

Chapters 1 to 4 list ATS routes proposed by States and international organizations in accordance with their geographical disposition. These routes have not been included in the BANP or implemented, and have no specific status, other than having been presented as a proposal and subject to consultation and review.

Regional ATS route proposals affecting Asia/Pacific airspace should be presented as part of a paper to ATM coordination groups or other suitable bodies, and then may be entered into the Route Catalogue by the Regional Office. The Regional Office will periodically present to appropriate ATM coordination groups or other suitable bodies the proposals within their geographical area of interest for review. After review, the ATS Route Catalogue may be updated by:

- Amendment to transfer proposals to Chapter A that have been agreed after subsequent proposal for amendment of the BANP; or
- Deletion of the proposal when it has been decided that there is no possibility of implementation in the foreseeable future; or
- Amendment with the addition of supplementary information; or
- Addition of a new ATS route proposal.

Amendment Record

Version/Amendment Number	Date	Amended by	Comments
0.1	14 February 2005	-	ARNR/TF/2 developed the draft version.
0.2	5 May 2005	ARNR/TF/3	Finalized the format following contribution from the members.
0.3	29 July 2005	ATM/AIS/SAR/SG/15	Sub-Group concluded that the Catalogue be adopted (Draft Conclusion 15/3).
1	26 August 2005	APANPIRG/16	APANPIRG/16 decided that the Catalogue be accepted (Decision 16/9).
2	24 January 2006	BBACG/17	Reviewed and updated the Catalogue.
3	19 May 2006	SEACG/13	Reviewed and updated the Catalogue.
4	26 January 2007	BBACG/18	Reviewed and updated the Catalogue.
5	23 May 2008	SEACG/15	Reviewed and updated the Catalogue.
6	15 May 2009	SEACG/16	Reviewed and updated the Catalogue.
7	27 May 2010	SEACG/17	Reviewed and updated the Catalogue.
8	10 March 2011	BBACG/21	Reviewed and updated the Catalogue.
9	6 May 2011	SEACG/18	Reviewed and updated the Catalogue.
10	22 September 2011	SAIOACG/1	Reviewed and updated the Catalogue.
11	22 June 2012	ATM/AIS/SAR/SG/22 APANPIRG/23	Reviewed, reformatted, and updated the Catalogue, approved by APANPIRG/23.
12	26 June 2013	SAIOACG/SEACG, ATM/SG	Reviewed, reformatted, and updated the Catalogue, approved by APANPIRG/24.
13	11 September 2014	SAIOACG/SEACG, ATM/SG APANPIRG/25	Reviewed subsequent to Easter Island being transferred out of the Region; added European trans-regional proposals
14	10 September 2015	SAIOACG/SEACG, ATM/SG APANPIRG/26	Reviewed, reformatted, and updated the Catalogue, removal of Chapter A

Chapter A: Routes in BANP

The segments which have not been implemented are shown by **bold** significant points.

LOWER ATS ROUTES		
A1	LIMLA 1546.0N 09836.0E BANGKOK UBON DANANG BUNTA IKELA 1839.7N 11214.7E CHEUNG CHAU ELATO 2220.0N 11730.0E MAKUNG TAIBEI KAGOSHIMA HACHIOJIMA (APAC 14/01 - ATS)	LUANG PRABANG A211 MANADO TARAKAN TAWAU A212 PUPIS PAGO PAGO NIUE A215 PORT MORESBY MERAUKE HASANUDDIN KEVOK 0425.0S 11500.0E A216 COOKTOWN AKMIP 1200.0S 14448.6E KIKORI GUNNY 0500.00N 14400.00E RICHH 1711.49N 14249.12E A218 HARBIN (EKIMCHAN) (MYS SHMIDTA) BARROW A219 KARACHI NAWABSHAM KALAT 2902.0N 06635.0E SERKA 2951.0N 06615.0E KANDAHAR (TERMEZ) A220 CLUKK 3605.0N 12450.0E TAHITI A221 GUAM ROTA IS TINIAN IS SAIPAN A222 GUAM POHNPEI KOSRAE KWAJALEIN A224 JOHOR BAHRU MERSING
A91	(KYAKHTA) SERNA 5018.5N 10628.1E ULAN BATOR	
A201	LASHIO AGARTALA RAJSHAHI MONDA 2521.00N 08626.25E PATNA LUCKNOW	
A202	CHEUNG CHAU SIKOU 2050.6N 11130.0E SAMAS 2030.3N 11029.7E ASSAD 182028N 1074053E XONUS 1804.2N 10714.0E DONGHOI VILAO 1718.0N 10600.0E SAVANNAKET KORAT BANGKOK	
A204	YOROI 4500.5N 14147.1E RISHIRI AKSUN 4545.1N 14054.3E (SELT) (4713.3N 14013.3E)	
A206	Proposed by Vietnam and Laos ASSAD VINH NONGT	

A325	PRARATAPGARH TASOP 2514.1N 07045.0E KARACHI JIWANI	SUMBAWA	
A326	SHIGEZHUANG OKTON 3911.2N 11653.5E TIANJIN MAKNO 3827.6N 12110.0E SANKO 3814.2N 12228.4E DONVO 3734.0N 12320.0E AKARA 3130.0N 12330.0E	A345	PYONGYANG GOLOT 4012.5N 12430.5E FENGCHENG KAIYUAN HAILAR KAGAK 4916N 11806E MANLI 4935N 11727E TELOK 4938N 11722E (CHITA)
A331	ZIGIE 2419.0N 15717.5W SEDAR 4530.4N 12643.0W	A346	HAMILTON IS AUCKLAND
A332	APACK 2402.8N 15619.3W AMITY 2626.0N 15229.0W HEMLO 4318.2N 12640.8W	A347	MUMBAI BODAR 2236.3N 07413.3E PRATAPGAPH DELHI
A334	HAT YAI KOTA BHARU	A348	MELBOURNE EAST SALE NISEP 4146.6S 15601.5E
A337	ADKAK 3354.0N 14210.0E TEGOD 2100.0N 14512.0E JUNIE 1132.5N 14706.3E KISME 0500.0N 14805.4E	A364	SHACHE KASHI KURUM 4006.0N 07407.0E
A338	CHRISTCHURCH APORO 5000.0S 17120.0E BYRD	A450	DENPASSAR HASSANUDDIN CAHYO 033000N 1333000E YAP IS GUAM WAKE KATHS 2104.6N 16123.4W
A339	PERTH CURTIN ELBIS 0905.9S 12743.7E SHREE 0539.0N 13109.2E KEITH 2100.0N 13456.8E SABGU 2529.9N 13459.3E MAKDA 2716.0N 13551.2E TAXON 3000.0N 13714.5E YOSHI (APAC 14/01 – ATS)	A453	(Secretariat correction to reflect ANP) KABUL GHAZNI KANDAHAR (KANDAHAR) (ZAHEDAN) (BANDER ABBAS)
A340	RAYONG BISOR 1221.0N 10247.0E PHNOM PENH	A454	KARACHI PARET 2527.2N 06451.5E TAPDO 2424.0N 06120.0E (VUSET)
A341	KOTA KINABALU SANDAKAN ZAMBOANGA	A455	PESHAWAR METAR 3406.0N 07128.0E KOTAL 3406.0N 07109.0E
A342	COLD BAY OLCOT 5125.8N 16533.3E		
A344	ROZAX 0245.6S 11140.0E		

A456	AMRITSAR		AUCKLAND
	LAHORE		
	MOLTA 3012.0N 07236.2E	A465	KOLKATA
	BINDO		VISHAKAPATNAM
A457	HAT YAI		CHENNAI
	TAMOS 0632.2N 10024.0E		COLOMBO
	ALOR SETAR	A466	(KABUL)
	PENANG		SANAM 3305.0N 07003.0E
	KUALA LUMPUR		DERA ISMAIL KHAN
	JOHOR BAHRU		JHANG 3116.0N 07218.0E
A460	KUQA		SAMAR 3120.8N 07434.0E
	REVKI 4232.5N 8013.2E		ASARI 3048.3N 07509.6E
	(KIRBALTABAY)		DELHI
A461	DAWANGZHUANG	A467	BIRATNAGAR
	WEIXIAN		KATI HAR
	ZHOUKOU		KOLKATA
	HEKOU	A468	KUQA
	LONGKOU		KAMUD 4134.0N 07850.0E
	LILING	A469	HO CHI MINH
	YINGDE		CONSON IS
	SHILONG	A470	HONG KONG
	BEKOL 2232.6N 11408.0E		MAGOG 2217.3N 11549.4E
	CHEUNGCHAU		SHANTOU
	NOMAN 2000.0N 11640.3E		XINGLIN
	MUMOT 1930.4N 11714.5E		FUZHOU
	AVMUP 1843.3N 11808.3E		YUNHE
	SAN FERNANDO		TONGLU
	CABANATUAN		HANGZHOU
	MANILA		LISHUI
	SAN JOSE		BANTA
	ZAMBOANGA		PIXIAN
	AMBON	A472	KOTAL 3406.0N 07109.0E
	DARWIN		METAR 3406.0N 07128.0E
	ALICE SPRINGS		BAREV 3406.0N 07135.0E
	LEIGH CREEK		PESHAWAR
A462	KOLKATA	A474	DELHI
	DHAKA		ASOVO
A464	CHIANG MAI		MUMBAI
	BANGKOK		MURUS 0600.0S 06319.7E
	HAT YAI		(PLAISANCE)
	IPOH	A575	PYONGYANG
	BATU ARANG		GOLOT 4012.5N 12430.5E
	KUALA LUMPUR		FENGCHENG
	SINGAPORE		DONGYANGJIAO
	TINDAL		DAHUSHAN
	TAROOM		CHAOYANG
	LORD HOWE IS		

	ANDIN 4106.0N 11843.5E		BUSAN
	GUBEIKOU		SEOUL
	FENGNING		
	EREN		
	INTIK 4341.5N 11155.0E	A583	HONG KONG
	SAINSHAND		CHEUNG CHAU (APAC 01/2)
	ULAN BATOR		SABNO 1859.1N 11550.7E
	(KYZYL)		MAVRA 1814.4N 11615.1E
			AKOTA 1706.6N 11651.6E
A576	MEDAN		IBOBI 1354.4N 11832.6E
	SINGAPORE		REKEL 1324.1N 11848.3E
	DENPASAR		LEGED 1301.9N 11859.6E
	CURTIN		TOKON 1142.0N 11940.3E
	ALICE SPRINGS		ZAMBOANGA
	PARKES	A584	TONGA
	SYDNEY		NIUE
			APIA
A577	SHIKANG		FUNAFUTI
	KADET 2100.0N 11934.0E		NAURU
		A585	PALEMBANG
A578	TONIK 3200.0N 14600.0E		JAKARTA
	PHONPEI		PORT HEDLAND
	NAURU		CEDUNA
	TARAWA		ADELAIDE
	NADI	A586	INTOS 3722.00N 13120.00E
	AUCKLAND		PUSAN
A579	SYDNEY		CHEJU
	NADI		ERABU
	CARRP 1904.4N 15935.0W		NAHA
A580	AUCKLAND	A587	SUMBAWA
	NAUSORI		ALICE SPRINGS
	APIA	A588	DALIAN
A581	BAGO		WAFANGDIAN
	CHIANG MAI		WANGBINGOU
	CHIANG RAI		KAIYUAN
	PONUUK 2018.8N 10023.0E		CHANGCHUN
	SAGAG 2111.5N 10137.4E		HARBIN
	BIDRU		SIMLI 5017.4N 12722.1E
	KUNMING	A589	DELHI
	MAGUOHE		BUTOP 2919.7N 07523.9E
	QIANXI		ASARI 3048.3N 07509.5E
	HUAYUAN	A590	JOMALIG
	LINLI		MINAMI DAITO
	WUHAN		YOSHI 3310.2N 13857.4E
A582	JOMALIG		OYAMA
	NAHA		KAGIS 3549.0N 14234.0E
	KAGOSHIMA		PABBA 3700.0N 14400.0E
	IKISHIMA		

	PASRO	1417.1N	16040.5E
	AMOTT	6054.0N	15121.6W
	(APAC 14/01 – ATS)		
A591	QINDAO		
	XUEJIADAO		
	LATUX	3532.0N	12044.0E
	MUDAL	3651.0N	12322.0E
	AGAVO	3710.0N	12400.0E
A592	PUPIS	1000.0S	17105.5W
	APIA		
	VAVA'U		
	TONGA		
A593	TANGHEKOU		
	XILIUHETUN		
	SHIGEZHUANG		
	POTOU		
	PIXIAN		
	WUXI		
	SHANGHAI		
	NANHUI		
	FUKUE		
A595	FUKUOKA		
	IKISHIMA		
	CHEJU		
A596	HUAIROU		
	HUAILAI		
	TIANZHEN		
	LIANGCHENG		
	BAOTOU		
	DENGKOU		
	YABRAI		
A597	KUSHIMOTO		
	MONPI	2100.0N	14036.0E
	GUAM		
	HONIARA		
	NOUMEA		
	AUCKLAND		
A598	BRISBANE		
	HONIARA		
	NAURU		
	MAJURO		
A599	CHITTAGONG		
	LINSO	2322.5N	09855.0E
	GENGMA		
	KUNMING		
	LUXI		
	BOSE		
	LAIBIN		
	GAOYAO		
	PINGZHOU		
	ZHULIAO		
	WONGYUAN		
	NANXIONG		
	GANZHOU		
	NANFENG		
	SHANGRAO		
	TONGLU		
	NANXUN		
	SHANGHAI		
A791	(IMLOT)		
	JIWANI		
	KARACHI		
	PRATAGARH		
	BHOPAL		
	JAMSHEDPUR		
	KOLKATA		
B200	ENKIP	3547.0S	17730.0E
	FICKY	3133.6N	12123.5W
B202	UBON		
	PAKSE		
	PLEIKU		
B203	KATHMANDU		
	BAGDOGRA		
	GUWAHATI		
	SILCHAR		
	IMPHAL		
	LASHIO		
B204	GOMES	1324.0N	10135.3E
	SIEM REAP		
B205	RAYONG		
	BOKAK	1257.5N	10230.0E
	SIEM REAP		
B206	URUMQI		
	FUKANG		
	ALTAY		
	GOPTO	4905.5N	08728.0E
	(AKTASH)		
B209	JAMSHEDPUR		
	KHAJURAHO		

	TIGER	2828.8N 07214.9E		B326	HONIARA	
B210	TASOP	2513.3N 07048.9E			CHOKO	2022.6N 16053.0W
	NAWABSHAH			B328	EREN	
B211	MUMBAI				TAMURTAI	
	EPKOS	1653.1N 07407.2E			TIANZHEN	
	CHENNAI				NANCHENGZI	
					WEIXIAN	
B213	LHASA			B329	PHNOM PENH	
	CHENGDU				PAKSE	
B214	NASAN				LEBAL	1630.2N 10556.7E
	LADON	2106.2N 10258.0E			VILAO	1722.0N 10605.0E
	AKSAG	2049.1N 10027.3E		B330	HONG KONG	
B215	DAWANGZHUANG				TAMOT	
	TAIYUAN				PINGZHOU	
	YINCHUAN				GAOYAO	
	YABRAI				DOUJIANG	
	JIUQUAN				QUIANXI	
	HAMI				FUJIACHANG	
	FUKANG				JINGTAI	
	URUMQI				YABRAI	
	KUQA				MORIT	4202.0N 10249.0E
	SHACHE				NIDOR	5029.4N 09125.8E
	HONGQILAPU				(LIKAR)	
	PURPA	3656.5N 07524.5E		B331	CHEUNG CHAU	
	GILGIT				KAPLI	2110.0N 11730.0E
	ISLAMABAD				HENGCHUN	
B218	KUNMING			B332	SANKO	3814.2N 12228.4E
	SIMAO	2243.1N 16058.2E			TOMUK	3843.0N 12400.0E
	SAGAG	2111.5N 10137.4E			PYONGYANG	
	VIENTIANE				SINSONGCHON	
	LOEI				SONDO	3947.0N 12713.6E
	CHUM PHAE				KANSU	3838.0N 13228.5E
B219	PENANG			B333	AUCKLAND	
	KOTA BHARU				PORT MORESBY	
B220	BRISBANE			B334	BEIJN	
	PORT MORESBY				TANGHEKOU	
B221	NINAS	3100.0N 12215.0E			FENGNING	
	PINOT	3125.2N 12214.2E			TONGLIAO	
	SAGUT	3500.0N 12040.3E		B337	(TAKHTOYAMSK)	
	XUEJIADAQ				ANIMO	4508.3N 14337.8E
B222	VINIK	0838.6N 11613.8E			ASAHIKAWA	
	KOTA KINABALU			B338	MERSING	
B223	(DABUR	5147.1N 14235.9E)			TEKONG	
	LUMIN	4545.0N 14150.3E			ANITO	0017.0S 10452.0E
	WAKKANAI					

B339	ULAN BATOR POLHO 4447.0N 11315.0E FENGNING	PORT MORESBY KADAB 0458.0S 14100.0E BIDOR 0400.0S 13130.0E TACLOBAN MANILA CABANATUAN LAOAG MIYAKO JIMA OKINAWA	
B345	KATHMANDU BHARATPUR BHAIRAHAWA LUCKNOW	B463	BAGO MANDALAY LASHIO
B346	LUANG PRABANG NOBER 1516.6N 10040.1E BANGKOK	B465	KOLKATA CHITTAGONG MANDALAY LUANG PRABANG HANOI
B349	BALI POTIP 2141.6S 12508.0E	B466	JOHOR BAHRU BATU ARANG CHENNAI MUMBAI
B450	SYDNEY LORD HOWE IS NORFORK IS PAGO PAGO	B467	KANGWON INTOS 3722.0N 13120.0E KANSU 3838.0N 13228.5E NULAR 4059.2N 13411.0E (TEKUK) 4241.0N 13527.4E
B451	HAILAR QIQIHAR HARBIN BISUN 4314.0N 13111.8E (VLADIVOSTOK) IGROD 4139.0N 13647.0E KADBO 3914.0N 13745.0E	B468	DIENBIEN LADON 2106.2N 10258.0E LUANG PRABANG
B452	TONIK 3200.0N 14600.0E HONIARA NADI	B469	SINGAPORE JAKARTA CARNARVON GERALDTON PERTH CAIGUNA WHYALLA GRIFFITH SYDNEY
B453	MIDDLETON IS KATCH 5400.0N 13600.0W DAASH 4226.5N 12600.1W	B470	SINGAPORE PANGKALPINANG JAKARTA
B454	PAGO PAGO RAROTONGA TONYS 3019.9N 12249.2W	B472	LIPA ILO ILO COTABATO SELSO 0400.0N 12616.0E
B455	VAVA'U NISEX 1547.3S 17136.4W		
B456	WEWAK JAYAPURA		
B459	MUMBAI CLAVA 0134.0N 06000.0E (PRASLIN)		
B460	KHORAT SAVANNAKET		
B462	MACKAY HAMILTON IS.		

	TOREX	0724.0N 13335.0E			KOTA KINABALU	
	GOVE					
	NORMANTON					
B473	LIPA			B586	NOUMEA	
	ROXAS				SEKMO	
	CAGAYAN DE ORO				KAPKI	
	DAVAO				PORT MORESBY	
	SADAN	0400.0N 12805.0E			GUAM	
	CAIRNS				OMLET	2100.0N 14259.2E
B474	SYDNEY				TATEYAMA	
	SANTO				OSHIMA	
	NANUMEA				(APAC15/03 ATS)	
	CHOKO	2022.6N 16053.0W		B587	ST GEORGE	
B480	(RAZDOLITE)				KOWANYAMA	
	LETBI	5011.9N 10330.6E			OPABA	0851.5S 13804.0E
	BULGAN				TIMIKA	
	MORIT	4202.0N 10249.0E			BIAK	
B575	AUCKLAND				RENAN	0330.0N 13416.6E
	TONGA				ENDAX	1415.0N 13000.0E
	PAGO PAGO				ATVIP	2100.0N 12422.0E
B576	TAIBEI				HUALIEN	
	CHEJU			B589	PORT MORESBY	
	SEOUL				KAPKI	1014.9S 14817.7E
B577	NADI				BUKA	
	WALLIS IS				MAJURO	
	APIA			B590	NOUMEA	
	PAGO PAGO				PORT VILA	
	FICKY	3133.5N 12123.5W			NAURU	
B578	BRISBANE			B591	SHANGHAI	
	NOUMEA				TAIBEI	
	TAHITI				HENCHUN	
B579	PHUKET				(Partially implemented)	
	LANGKAWI			B592	KOTA KINABALU	
	PENANG				JAKARTA	
B580	SYDNEY			B593	KOLKATA	
	NOUMEA				COMILLA	
	CHOKO	2022.6N 16053.0W			AGARTALA	
B581	NADI				GUWAHATI	
	FICKY	3133.5N 12123.5W		B595	TAHITI	
B583	BRUNEI				KONA	
	DARWIN			B596	RAROTONGA	
B584	DENPASAR				DOVRR	1843.0N 15740.0W
	ELANG	0056.0S 11449.5E		B597	ERABU	
					TANEGASHIMA	
					SHIMIZU	

B598	DARWIN			G209	LAERMONTH		
	THURSDAY ISLAND				CHRISTMAS ISLAND		
	PORT MORESBY				PALEMBANG		
	KAPKI 1014.9S 14817.7E			G210	PANJGUR		
	HONIARA				KARACHI		
	PORT VILA				MUMBAI		
	NADI			G212	(KHABAROVSK)		
	NAUSORI				ARGUK 4753.5N 13439.4E		
	TONGA				HAIQING		
	RAROTONGA				JIAMUSI		
B599	NOUMEA				HARBIN		
	NADI				TONGLIAO		
	TAHITI				GUBEIKOU		
B757	KATCH 5400.0N 13600.0W				QINBAIKOU		
	CAPE NEWENHAM				NANCHENGZI		
	NULUK 5822.9N 17706.1W				TAIYUAN		
B932	BAMOK 5625.5N 17249.3E				YIJUN		
	(NETRI 4739.3N 15000.0E)				SANYUAN		
	ODERI 4439.0N 14515.2E				XIAOYANZHUANG		
	MEMANBETSU				NINGSHAN		
G200	CHRISTMAS IS.				WUFENGXI		
	COCOS IS				FUJIACHANG		
	(PLAISANCE)				WEINING		
G202	(KANDAHAR)				MAGUOHE		
	ZHOB				KUNMING		
	RAHIM YAR KHAN			G213	BIAK		
G203	MIHO				BEKUB 0350.0N 13845.0E		
	PUSAN				GUAM		
G204	ELNEX			G214	JIWANI		
	SHENGXIAN				PANJGUR		
	METAN				RAHIM YAR KHAN		
	SHANGHAI				MOLTA 3012.0N 07236.2E		
G205	HAMILTON IS.			G215	DUTCH HARBOR		
	GURNEY				OLCOT 5125.8N 16533.3E		
	JUNIE			G216	(DORAB)		
G206	DILARAM				ALPOR 2404.7N 06120.0E		
	KABUL				LATEM 2431.7N 06449.7E		
	SABAR				KARACHI		
	PURPA			G218	HOHHOT		
G208	MUMBAI				TUMURTAI		
	PARTY 2414.6N 07052.0E				POLHO 4447.0N 11315.0E		
	KARACHI				SOLOK 4954.0N 11545.0E		
	PANJGUR			G219	VIRUT 0230.8N 10402.7E		
	(ZAHEDAN)				TEKONG		
				G221	PHUCAT		

	BUNTA	1650.0N 10923.7E	G332	TANGHEKOU	
	BAOLONG			CHAOYANG	
	HAIKOU		G333	DELHI	
	SAMAS			ESDEM	
	SIKOU			TIGER	2828.8N 07214.9E
G222	SAPDA		G334	KUALA LUMPUR	
	BROOME			TIOMAM	
	AYERS ROCK			BUNTO	0242.0N 10600.0E
	PARKES			DOTAS	0201.1N 10820.5E
G223	TATEYAMA			SIBU	
	ADKAK		G335	KATHMANDU	
	TONIK	3200.0N 14600.0E		JANAKPUR	
	NAURU			PATNA	
	NADI		G336	DHANBAD	
	NAUSORI			PATNA	
	NIUE			SIMRA	
	AITUTAKI			KATHMANDU	
	TAHITI		G337	PERTH	
	(LIMA)			CHRISTMAS IS	
	(APAC15/04 — ATS)			PEKANBARU	
G224	NORFORK IS		G338	CHOIBALSAN	
	NADI			KAGAK	
	PAGO PAGO		G339	PUSAN	
	TAHITI			FUKUOKA	
	ISLA DE PASCUA			KAGOSHIMA	
	(SANTIAGO)			TANEGASHIMA	
G325	COLOMBO			PAKDO	
	TIRUCHCHIRAPPALLI			GUAM	
G326	BALI		G340	QINGBAIKOU	
	TENNANT CREEK			HUAILAI	
	BRISBANE		G341	CHANGCHUN	
G327	NANHUI			WANGQING	
	NINAS	3100.0N 12215.0E	G342	CAIRNS	
	AKARA	3130.0N 12330.0E		HONIARA	
G329	BRISBANE		G344	COMFE	3624.0N 14618.0E
	NORFORK IS			CUTEE	4624.9N 16218.6E
G330	SHANGHAI			CUDDA	5647.9N 16018.1W
	POMOK		G345	UNTAN	
	NANTONG			CHANGZHOU	
	GURNI	3209.2N 12058.5E		LISHUI	
	PIMOL	3215.0N 11944.0E	G346	KIMCHAEK	
G331	PHUKET			NULAR	4059.2N 13411.0E
	PADET			IGROD	4139.0N 13647.0E
	DAWEI				

G347 AUCKLAND
POPIR 2500.0S 17804.8W
PADDI 1825.7N 15854.8W

G348 PARO
BAGDOGRA
MECHI
KATHMANDU

G424 (DAR ES SALAAM)
VUTAS 0912.0N 06000.0E
ALATO 1340.7N 06344.0E

G450 (MOGADISHU)
MUMBAI
NAGPUR
KOLKATA

G451 AHMEDBAD
SASRO 2404.3N 07100.0E
PARTY 2414.6N 07052.0E

G452 (ZAHEDAN)
RAHIM YAR KHAN
TIGER 2828.8N 07214.9E
DELHI

G453 KUALA LUMPUR
KOTA BHARU

G454 (PLAISANCE)
BOBOD 0600.0S 06941.1E
PADLA 0446.1N 07800.0E
COLOMBO

G455 SHANGHAI
PINOT 3125.2N 12214.2E
AKARA 3130.0N 12330.0E

G457 DOVRR 1843.0N 15740.0W
ELLS 0500.0S 16704.1W
PAGO PAGO
FAROA 2500.0S 17502.3W
DIVSO 3452.3S 17624.5E

G458 BANGKOK
SURAT THANI
PHUKET

G459 CAIRNS
TIMIKA

G460 KUCHING
SIBU
BINTULU

BRUNEI

G463 RAJSHAHI
DHAKA
CHITTAGONG
BAGO
BETNO 1505.8N 09812.7E
BANGKOK

G464 PONTIANAK
ROZAX 0245.0S 11140.0E
BALI
KARRATHA
BALLIDU
PERTH

G465 (PRASLIN)
MALE
COLOMBO

G466 HO CHI MINH
PHUCAT
HENGCHUN

G467 LUBANG
JOMALIG
GUAM

G468 PENANG
MEDAN

G469 PORT HEIDEN
ST PAUL IS
NYMPH 5324.5N 16814.4E

G470 XIANYANG
FENGHUO
CHANGWU
JINGNING
JINGTAI
QITAI

G471 SHILONG
LONGMEN
GANGZHOU

G472 KARACHI
AHMEDABAD
NAGPUR
BHUBANESHWAR
PATHEIN
BAGO

G473 BAGO
MAKAS 1649.7N 09830.0E

	PHITSANULOKE				BISIV 4456.3N 14412.3E
	UBON				MONBETSU
G474	BANGKOK				G584 KUALA LUMPUR
	MENAM 1357.3N 10247.7E				PEKAN
	SOURN 1345.5N 10600.0E				KUCHING
	ANINA 1359.0N 10725.0E				G585 MIHO
	PHUCAT				POHANG
G575	TAHITI				SEOUL
	RANGIROA				G586 YINGDE
	FICKY 3133.5N 12123.5W				ERTANG
G576	CHEER 5310.0N 14000.1W				G587 TAIBEI
	SPONJ 4992.0N 13005.1W				PABSO 2538.0N 12252.0E
G578	GURAG 2100.0N 12725.0E				BULAN 2704.0N 12400.0E
	DILIS 1431.0N 12600.0E				G588 MOOREN
	TACLOBAN				KHOVD
	MACTAN				TEBUS 4725.1N 09027.7E
	ZAMBOANGA				TESAN 4701.7N 08947.8E
	DENPASAR				FUKANG
	PORT HEDLAND				G590 SIMRA
	PARABURDOOD				VARANASI
	PERTH				KHAJURAHU
G579	JAKARTA				BHOPAL
	PALEMBANG				INDORE
	SINGAPORE				BODAR 2236.3N 07413.3E
	JOHOR BAHRU				G591 CAIRNS
G580	TOMAN 0121.5N 10547.0E				NOUMEA
	NIMIX 0124.9N 10759.2E				NORFORK IS
	ATETI 0125.7N 10830.1E				AUCKLAND
	KUCHING				G593 FUNAFUTI
	MIRI				NAUSORI
	BRUNEI				NIUE
G581	HONG KONG				RAROTONGA
	ELATO 2220.0N 11730.0E				G594 TIAMU
	HENGCHUN				TAHITI
	MIYAKO JIMA				RAROTONGA
	BISIS 2647.0N 12633.0E				AUCKLAND
	ERABU				SOLIT 2355.0S 07500.0E
	TAPOP 3240.0N 13607.9E				(PLAISANCE)
	(APAC 14/01 ATS)				G595 (TAHITI)
G582	PUGER 0324.1N 10017.6E				SYDNEY
	BATU ARANG				MABAD 2648.4S 07500.0E
	PEKAN				(PLAISNACE)
G583	EMMONAK				G597 DONVO 3734.0N 12320.0E
	BESAT 5945.0N 17925.1W				AGAVO 3710.0N 12400.0E
	(UST BOLSHERETSK)				

	SEOUL				CAIRNS
	KANGNUNG				
	MIHO			R211	KASMI 3601.3N 14040.3E
	OTSU				SWAMP 3619.2N 14032.3E
	KOWA				DAIGO
	OSHIMA				IWAKI
	VENUS 3618.2N 14042.1E				NIIGATA
G598	LUCKNOW				KADBO 3914.0N 13745.4E
	APIPU 2658.6N 08300.0E				AVGOK 4336.0N 13815.0E
	SIMARU				VELTA 4529.0N 13710.0E
G599	AUCKLAND				(APAC15/04 - ATS)
	TAHITI			R212	(DIEGO GARCIA)
R200	PINGZHOU				GUDUG 0704.6S 07500.0E
	LIANSHENGWEI				PIBED 0520.2S 09044.0E
	BIGRO			R215	CHIANG RAI
	ZHANJIANG				NAN
R201	BANGKOK				LUANG PRABANG
	UTAPAO			R217	NODAN 4025.0N 14500.0E
R202	PHRAE				SENDAI
	TATEL 1729.1N 098 45.8E				NIIGATA
R203	SAPAM 0804.6N 09733.0E			R218	DELHI
	PHUKET				DIPAS 2738.3N 07551.9E
R204	KEITH 2100.0N 13456.5E				JAIPUR
	KALIN 0000.0N 14200.0E			R220	DAIGO
	LIDIT 0918.0S 14220.0E				IWAKI
	HORN IS				NANAC 3854.2N 14313.9E
	CAIRNS				NIPPI 4942.6N 15920.8E
R205	ANARAK				NODLE 6117.0N 15200.0W
	BIRJAND				(APAC15/04 - ATS)
R206	PORT HEDLAND			R221	MERSING
	CHRISTMAS IS				PULAU TIOMAN
	JAKARTA			R222	AVGOK 4336.0N 13815.0E
R207	VIENTIANE				(YEDINKA)
	NAN			R223	BRUNEI
	CHIANG MAI				ELANG 0056.0S 11449.5E
	MANDALAY			R224	YANJI
R208	KUALA LUMPUR				VASRO 4227.8N 12944.4E
	KUALA TRENGGANU				KANSU
	KANTO 0649.9N 10348.3E			R325	KATHMANDU
R209	TATOX 0857.0N 09702.0E				JANAKPUR
	LANGKAWI				DUMKA 2411.0N 08721.3E
R210	PORT MORESBY				KOLKATA
					PHUKET

	HAT YAI			R341	KODIAK		
	IPOH				NINNA	5455.7N	17158.8E
	JOHOR BAHRU						
R326	NORFOLK IS			R342	MANADO		
	CHRISTCHURCH				BONDA	0200.0N	12451.2E
					PEDNO	0400.0N	12521.0E
R327	GISBORNE				GENERAL SANTOS		
	FAROA				DAVAO		
R328	DANANG			R343	NANXIANG		
	HUE				WUXI		
	LEBAL	1630.2N	10556.7E		LISHUI		
	SAVANNAKHET				HEFEI		
					WUHAN		
R329	KAGLU	1231.2N	07200.0E		LONGKOU		
	MALE				LAOLIANGCANG		
	GAN				DARONGJIANG		
	(DIEGO GARCIA)				LAIBIN		
					NANNING		
R330	SHEMYA			R344	KATHMANDU		
	POWAL	5024.3N	16530.8E		BIRATNAGAR		
					KATIHAR		
R332	MAJURO				RAJSHAHI		
	BONRIKI						
	AKUMO	0614.9S	17535.5E	R345	ROIET		
	ROTUMA				BIDEM		
	NADI					142153.57N	1034750.07E
						SIEM REAP	
R334	RAYONG			R346	TOWNSVILLE		
	KOH KONG				PORT MORESBY		
	SIHANOUK						
	PHU QUOC						
R335	VINH			R347	NIIGATA		
	ALPHA	1832.6N	10319.7E		SADO		
	VIENTIANE				EKVIK	3944.7N	13636.5E
					IGROD	4139.0N	13647.0E
R336	ADAK				(VELTA)	4529.0N	13710.0E
	CARTO	4840.5N	16847.0E	R348	KADAP	0200.0S	08409.6E
					LATEP	0610.3S	07500.0E
R337	TACLOBAN				(DIEGO GARCIA)		
	KOROR						
R338	NOME			R349	LEMOK	1000.0N	10302.2E
	NINNA	5455.7N	17158.8E		RASER	1000.0N	10506.0E
					HO CHI MINH		
R339	SIKOU	2050.6N	11130.0E				
	HUGUANG			R450	KIETA		
	NANNING				HONIARA		
	BOSE						
R340	AMBON			R451	ADAK		
	WALGETT				OGDEN	4929.2N	16102.3E
				R452	SONDO	3947.0N	12713.6E

	HAMUN	3955.1N 12731.1E		R467	KUALA LUMPUR	
	KIMCHAEK				GUNIP	0429.9N 09931.9E
	UAMRI	4217.6N 13041.8E		R468	BANGKOK	
	(TEKUK)	4241.0N 13527.4E			BOKAK	1257.5N 10230.0E
R453	NADI				PHNOM PENH	
	APIA				SAPEN	1102.2N 10611.0E
					HO CHI MINH	
R455	PONTIANAK			R469	PEKANBARU	
	KUCHING				SINGAPORE	
R457	CHENNAI			R470	VIENTIANE	
	TIRUCHIRAPALLI				UDON THANI	
	MADUDAI				KHON KAEN	
	MADURAI			R472	KOLKATA	
	GUTEG	091100.0N0773154.0E			RAJSHAHI	
	TRIVANDRUM				GUWAHATI	
	MALE					
	(APAC15/01 - ATS)			R473	LILING	
R458	MUMBAI				NANXIONG	
	EPKOS	1653.0N 07407.2E			WONGYUANG	
	BELGAUM				ZHULIAO	
R460	DELHI				PINGZHOU	
	ALIGARH				TAMOT	2221.5N 11352.0E
	LUCKNOW			R474	GAOYAO	
	VARANASI				NANNING	
	GAYA				LONGZHOU	
	KOLKATA				HANOI	
R461	MUMBAI				VIENTIANE	
	MABTA	1708.5N 07321.8E			BANGKOK	
	BELGAUM			R575	PAPRA	1546.0N 10711.0E
	COIMBATORE				KOH KONG	
	COLOMBO				UPNEP	0942.2N 10029.6E
	MEDAN				SURAT THANI	
	KUALA LUMPUR			R576	DENNS	2222.0N 15353.0W
R462	(SEEB)				DINTY	3329.0N 12235.0W
	DENDA	2442.5N 06054.8E		R577	EBBER	2143.0N 15309.0W
	JIWANI				ELKEY	3241.0N 12203.0W
	KARACHI			R578	FITES	2049.0N 15300.0W
	UPAIPUR				FICKY	3133.5N 12123.5W
	DELHI				(R579 in Chapter 2)	
R463	APACK	2402.6N 15619.2W		R580	OATIS	3800.0N 14345.0E
	ALCOA	3750.0N 12550.0W			OMOTO	4859.7N 16000.7E
R464	BITTA	2332.0N 15529.0W			AMOTT	6053.9N 15121.8W
	BEBOP	3700.0N 12500.0W		R581	KOLKATA	
R465	CLUTS	2300.0N 15439.0W			MONDA	2521.0N 08626.4E
	CLUKK	3605.0N 12450.0W				

	SIMARA	
R582	NORFOLK IS	
	RAROTONGA	
R583	TAIBEI	
	BISIS	2647.1N 12633.1E
	OKINAWA	
	MINAMIDAITO	
	SABGU	
	BUNGO	
R584	AVLAS	
	SALVA	2222.7N 13059.7E
	KEITH	2100.0N 13456.48E
	GUAM	
	TRUK	
	POHNPEI	
	KWAJALEIN	
	MAJURO	
	JOHNSTON IS	
	CHOKO	2022.9N 16053.2E
R585	CITTA	2818.9N 14507.2W
	GATES	3412.7N 12303.9W
R587	BRISBANE	
	PORT VILA	
R588	PHUKET	
	RELIP	
	PHNOM PENH	
	PLEIKU	
R590	AMBON	
	COTABATO	
R591	CAPE NEWENHAM	
	AKISU	4734.3N 16119.3E
	ABETS	3605.0N 14425.0E
R592	BALI	
	ONSLOW	
	PERTH	
R594	LUCKNOW	
	JALALABAD	
	DELHI	
R595	ANPU	
	MIYAKO JIMA	
	KEITH	2100.0N 13456.5E
	GUAM	

R597	CABANATUAN	
	SARSI	1642.0N 12316.9E
	SKATE	1716.7N 12423.0E

R598	KOLKATA	
	RAJSHAHI	
	SAIDPUR	
	COOCH BEHAR	
	BOGOP	
	PARO	

R599	KIETA	
	GIZO	
	HONIARA	
	PORT VILA	
	WHANGAREI	
	AUCKLAND	

RNAV ROUTES

L301	BANGKOK	
	DAWEI	
	VISHAKHAPATNAM	
	BUSBO	1914.9N 07807.6E
	NOBAT	2109.0N 06800.0E
	RASKI	2303.5N 06352.0E
	(VAXIM	2319.0N 06111.0E)

L333	KHAJURAHO	
	JAIPUR	
	TIGER	2828.8N 07214.9E

L500	(SANTIAGO)	
	AUCKLAND	

L501	(RIO GALLEGOS)	
	AUCKLAND	

L503	BRISBANE	
	IGEVO	3636.5S 16300.0E
	CHRISTCHURCH	

L504	SINGAPORE	
	MANADO	

L505	BUSBO	1914.9N 07807.6E
	KAMOL	1938.1N 07340.0E
	NOBAT	2109.0N 06800.0E

L507	KOLKATA	
	BAGO	
	BANGKOK	

L508	RAROTONGA			L625	LUSMO	0333.7N	10655.7E
	CHRISTCHURCH				AKMON	0812.8N	11013.4E
	MELBOURNE				ALDAS	1056.9N	11212.3E
L509	GAYA				ANOKI	1222.0N	11315.0E
	ASARI	3048.3N	07509.5E		ARESI	1358.4N	11427.0E
L510	IBANI	250000N	0764311E		AKOTA	1706.6N	11651.6E
	ELBAB	201333N	0815954E		AVMUP	1843.3N	11808.3E
	LEKIR	071632N	0965243E		POTIB	2100.0N	12045.5E
	GIVAL	070000N	0980000E				
L512	INTOS	3722.0N	13120.0E	L628	LUBANG		
	NIIGATA				IBOBI	1354.4N	11832.6E
L513	PERTH				GUKUM	1356.8N	11637.2E
	HOBART				ARESI	1358.4N	11427.0E
	AUCKLAND				MESOX	1358.4N	11427.0E
L515	OBMOG	1154.1N	09623.5E		DAMEL	1358.7N	11130.6E
	IKULA	1000.0N	09721.2E		VEPAM	1358.0N	11000.0E
	PHUKET				PHUCAT		
L516	KITAL	2003.0N	06018.0E	L629	PEKAN		
	ELKEL	0149.0N	06911.0E		DOLOX	0448.7N	10522.9E
	(DIEGO GARCIA)			L635	PEKAN		
L517	MIRI				MABLI	0417.3N	10612.9E
	GULIB	0409.3N	11028.1E	L637	BITOD	0715.3N	10612.9E
	TERIX	0415.4N	10934.9E		TANSONNHET		
L518	UDAIPUR			L642	CHEUNG CHAU		
	PRATAPGARH				EPDOS	1900.0N	11333.3E
	INDORE				ENBOK	1833.4N	11329.5E
	MONPI	220414N	0755956E		EGEMU	1700.0N	11217.0E
	DUBOX	202215N	0764956E		VEPAM	1358.0N	11000.0E
	BEVSU	192649N	0771533E		PHANTHET		
	GUMIT	185931N	0772802E		CONSON IS		
	HIA	171340.1N	0782420.9E		ESPOB	0700.0N	10533.4E
	HYDERABAD				ENREP	0452.4N	10414.8E
	BBZ	163118.3N	0804733.7E		MERSING		
	VIJAYWADA			L643	TANSONNHET		
	GOPNU	155112N	0820224E		CONSON		
	EGOLU	141858N	0844952E	L644	CONSON		
	SADAP	120605.6N	0884120.8E		JAKARTA		
	(APAC15/02 - ATS)			L645	COLOMBO		
L521	SYDNEY				SULTO	0738.6N	08801.9E
	AUCKLAND				SAMAK	0758.7N	09425.0E
L626	KATHUMANDU				SAPAM	0804.6N	09733.0E
	ONISA	2858.1N	08005.5E		PHUKET		
	DELHI			L649	BRUNEI		
					ISKUD	0536.6N	11452.3E

URKET	0811.5N 11450.0E	SUNAN	0028.7S 07800.0E
LAXOR	0949.6N 11458.5E	DADAR	0200.0S 07927.1E
(APAC 14/10 ATS)		PERTH	
L756	CLAVA	L896	SAPDA 1200.0S 11125.6E
	MALE		NISOK 0302.9N 09200.0E
			DUGOS 0853.1N 08447.9E
			CHENNAI
L759	DELHI	L897	CHRISTMAS ISLAND
	POSIG 2713.0N 07734.9E		KETIV 0042.0S 09200.0E
	AGRA		COLOMBO
	KHAJURAHO	L899	HANIMAADHOO
	PHUKET		TRIVANDRUM
L760	AGRA	M300	(EMURU 2215.6N 05849.8E)
	GURTI 2743.8N 07747.8E		LOTAV 2037.0N 06057.0E
	DELHI		CALICUT
L774	(PLAISANCE)		MADURAI
	LELED 116.5S 07500.0E		SALAX 0212.4N 10133.7E
	ELATI 0200.0S 08957.7E	M501	GUAM
	KETIV 0042.0S 09200.0E		LIMLE 1639.7N 13000.0E
	MEDAN		SKATE 1722.2N 12425.6E
L875	VUTAS 091206N 0600004E		LAOAG
	MOXET 110146N 0645024E		NOMAN 2000.0N 11640.3E
	GOLEM 115739N 0672213E	M502	BANGKOK
	EGOGI 121100N 0690000E		AKATO 1337.3N 09910.3E
	GOKUM 122025N 0701005E		LALIT 1252.4N 09225.1E
	OLNIK 122850N 0711440E	M504	ALPOR 2404.7N 06120.0E
	BEDIL 123500N 0715958E		NODER 2350.0N 06700.0E
	DOLPI 124641N 0732711E		TELEM 2402.0N 06846.0E
	MANGALORE(MML)		
		M505	BUON MA THUOT
	PEXEG 130415N 0760230E		MONDULKIRI
	BANGALORE (BIA)		SIEM RIEP
	CHENNAI (MMV)		
L888	BIDRU 22 43.1N 100 57.9E	M510	CAN THO
	MAKUL 24 03.1N 100 34.6E		PHNOM PENH
	NIVUX 26 00.0N 100 00.0E	M512	COLOMBO
	PEXUN 30 55.9N 100 00.0E		ANIVE 0540.9N 07800.0E
	SANLI 32 00.0N 100 00.0E		MALE
	NOLEP 38 34.5N 088 42.5E	M520	SERNA 5018.5N 10628.1E
	SADAN 40 04.6N 086 00.0E		POLHO 4447.0N 11315.0E
	KUQA VOR (KCA)	M522	VINIK 0838.5N 11613.8E
L894	KITAL 2003.0N 06018.0E		
	MALE		

	KOTA KINABALU		OBLLOT	0142.9N 10641.8E
	MAMOK	0405.1N 11547.2E	TOMAN	0121.8N 10547.3E
	DENPASAR		(APAC 14/12 ATIS)	
M625	MELBOURNE		M750	KILOG
	WELLINGTON			2152.5N 11441.6E
M626	KOTA BHARU			ENVAR
	DAWEI			2159.5N 11730.0E
	BAGO			MOLKA
				2639.5N 12400.0E
M635	SINGAPORE			MOMPA
	RAMPY	0615.0 11320.8E		3050.5N 12955.1E
	CURTIN			BUNGU
				3407.1N 13929.9E
			(APAC 14/01 ATIS)	
M638	DOSTI	2558.0N 06503.0E	M751	MERSING
	KARACHI			PEKAN
	MINAR	2350.0N 06800.0E		KOTA BHARU
	SAPNA	2330.0N 06750.0E		REGOS
	NOBAT	2109.0N 06800.0E		1200.0N 10035.1E
	MUMBAI			BANGKOK
M639	IGEVO	3636.5S 16300.0E	M753	ENREP
	WELLINGTON			0452.4N 10414.8E
				BITOD
				0715.3N 10407.3E
				PHU QUOC
				PHNOM PENH
M641	MADURAI		M754	BRUNEI
	BIKOK	0817.0N 07836.0E		VINIK
	COLOMBO			0838.6N 11613.8E
	COCOS IS			TENON
	PERTH			0915.3N 11616.5E
M643	HOBART			LULBU
	CHRISTCHURCH			1104.7N 11624.4E
M644	RAYONG			NOBEN
	KOTA BHARU			1234.4N 11631.1E
				GUKUM
				1356.8N 11637.2E
				AKOTA
				1706.6N 11651.6E
M646	HENGCHUN		M755	PHNOM PENH
	ABVAR	1924.8N 12037.7E		KISAN
	LAOAG			1032.3N 10440.5E
	SAN FERNANDO			BITOD
	MANILA			0415.4N 10407.1E
	TOKON	1142.0N 11940.5E	M758	PEKAN
	PUERTO PRINCESAKOTA			LUSMO
	KINABALU			0333.7N 10655.7E
	BRUNEI			TERIX
	DARMU	0401.7N 11240.6E		0415.4N 10934.7E
	KAMIN	0234.7N 10855.9E		OLKIT
	SABIP	0209.7N 10750.7E		0450.1N 11149.1E
	ESPIT	0200.2N 10726.4E		KOTA KINABALU
			M759	OLKIT
				0450.1N 11149.1E
				BRUNEI
			M761	PEKAN
				BOBOB
				0222.1N 10706.1E
				SABIP
				0209.7N 10750.5E
				AGOBA
				0158.7N 10830.0E
				KUCHING
			M766	COLOMBO

JAKARTA			
INDRAMAYU			
MADIN	0617.9S	11023.0E	
CUCUT	0617.7S	11106.0E	
SURABAYA			
BALI			
DARWIN			
M765	KOTA BHARU		
	IGARI	0656.2N	10335.2E
	BITOD	0715.3N	10407.3E
	CONSON		
	DAGAG	0927.8N	10826.5E
	MAPNO	1013.1N	11020.1E
M767	JOMALIG		
	TOKON	1142.0N	11940.3E
	TENON	0915.3N	11616.5E
	TEGID	0857.2N	11551.6E
	TODAM	0631.7N	11235.4E
M768	DARWIN		
	BRUNEI		
	DOGOG	0525.3N	11407.5E
	ASISU	0559.1N	11320.8E
	TODAM	0631.6N	11235.6E
	LAGOT	0716.5N	11132.7E
	AKMON	0812.9N	11013.1E
	MOXON	0849.5N	10921.3E
	DAGAG	0927.8N	10826.5E
	TANSONNHAT		
M770	KOTA BHARU		
	RANONG		
	BUBKO	1911.1N	08839.8E
	KAKID	2038.6N	08659.9E
	JAMSHEDPUR		
M771	MERSING		
	DOLOX	0448.7N	10522.9E
	DUDIS	0700.0N	10648.6E
	DAGAG	0927.8N	10826.5E
	DOXAR	1222.0N	11022.7E
	DAMEL	1358.7N	11130.6E
	DONDA	1442.2N	11201.3E
	DOSUT	1702.0N	11340.8E
	DULOP	1814.2N	11432.6E
	DUMOL	1900.0N	11426.8E
	HONG KONG		
M773	BUBKO	1911.1N	08839.8E
	LEGOS	2138.0N	08805.3E
	KOLKATA		
M774	SINGAPORE		
	KIKEM	0952.9S	12607.4E
M875	KAKID	2038.6N	08659.9E
	BUTOP	2919.7N	07523.9E
	GUGAL	3014.5N	07358.0E
	DERA ISMAIL KHAN		
M890	LUCKNOW		
	CHANDIGARH		
	SAMAR	3120.8N	07434.0 ^E
M904	BANGKOK		
	U TAPHAO		
	DIPUN		
	SIRAT		
	TONIK		
	TIDAR		
	ODONO		
	UPRON		
	ENREP		
N502	PARDI	0034.0S	10413.0E
	BOBAG	0102.5N	10329.9E
N509	ELATI	0200.0S	08957.7E
	PORT HEDLAND		
N519	MUMBAI		
	SAPNA	2330.0N	06750.0E
	MINAR	2350.0N	06800.0E
	KARACHI		
N563	(EMURU	2214.0N	05853.6E)
	REXOD	2112.5N	06138.5E
	BANGALORE		
	MEDAN		
	SALAX	0212.4N	10133.7E
N564	DUGOS	0853.1N	08447.9E
	AKMIL	1151.6N	08006.9E
N571	(RAGMA	2306.0N	06105.7E)
	PARAR	2226.5N	06307.0E
	VAMPI	0610.9N	09735.1E
	GUNIP	0429.9N	09931.8E
N628	PEKANBARU		
	BUSUX	0355.0S	06000.0E
	(PRASLIN)		
N633	KUALA LUMPUR		
	PEKANBARU		

	POSOD	0329.5S 09409.9E			BANGKOK	
	PEDPI	1316.6S 07500.0E				
	(PLAISANCE)					
N640	TRIVANDRUM			N892	HENGCHUN	
	BIKOK	0817.0N 07836.0E			KABAM	2100.0N 11925.7E
	COLOMBO				MUMOT	1930.4N 11714.5E
	LEARMONTH				MAVRA	1814.4N 11615.1E
	MOUNT HOPE				MIGUG	1516.4N 11400.0E
	ADELAIDE				MESOX	1358.8N 11302.7E
N645	BRUNEI				MUGAN	1222.0N 11152.3E
	ELANG				MAPNO	1013.1N 11020.1E
		005535.64S 1145003.10E			MOXON	0849.5N 10921.3E
	SURABAYA				MELAS	0704.9N 10808.4E
N750	SYDNEY				MABLI	0417.3N 10612.9E
	CHRISTCHURCH				MERSING	
N759	MELBOURNE			N893	TELEM	2407.0N 06846.0E
	AUCKLAND				AHMEDABAD	
N774	AUCKLAND			N895	BETNO	1505.8N 09812.7E
	SYDNEY				PATHEIN	
N875	DENPASAR				BHUBANESWAR	
	PONTIANAK				NAGPUR	
	ARUPA	0031.7N 10848.8E			BODAR	2236.3N 07413.3E
	NIMIX	0124.9N 10759.4E			AHMEDABAD	
	BOBOB	0222.1N 10706.0E			PARTY	2414.6N 07052.0E
	ENREP	0452.4N 10414.7E				
N877	LAGOG	0835.6N 09159.8E		P173	TAPIS	3431.0N 06909.0E
	VISHAKHAPATNAM				DAVET	3657.6N 06447.2E
	NAGPUR				(APAC 14/11 ATS)	
	PRATAGRAPH			P501	ARAMA	0136.9N 10307.2E
N884	MERSING				BOBAG	0102.5N 10329.9E
	LUSMO	0333.7N 10655.7E			ANITO	0017.0S 10452.0E
	LAGOT	0716.6N 11131.5E		P518	NOBAT	2109.0N 06800.0E
	LAXOR	0949.6N 11448.5E			PARET	2527.2N 06451.5E
	LULBU				PANJGUR	
		110936.07N 1163217.70E		P570	(MIBSI	2341.7N 05755.4E)
	LEGED				KITAL	2003.0N 06018.0E
		130113.24N 1190006.94E			TRIVANDRUM	
	LUBANG				KATUNAYAKE	
	CABANATUAN				PEKANBARU	
	MIYAKOJIMA			P574	(KUSRA)	
N891	PAPA UNIFORM				TOTOX	2150.5N 06222.5E
	ENREP	0452.4N 10414.8E			BISSET	1823.4N 06918.1E
	IGARI	0656.2N 10335.2E			BELGAUM	
	SAMOG	0800.0N 13014.6E			CHENNAI	
	RAYONG				PUGER	0324.0N 10017.5E
				P627	PHUKET	
					KADAP	0200.0S 08409.6E

	KALBI (PLAISANCE)	UL425 (KUTVI) ASPUX 1744.00N 06000.00E
P628	LANGKAWI PORT BLAIR RAHIM YAR KHAN	DONSA 1434.14N 06511.32E VANVO 1043.00N 07200.00E
P646	BANGKOK JAMSHEDPUR PATHEIN VARANASI	UM551 DONSA 1435.3N 06511.6E ANGAL 1614.1N 06000.1E (AVAVO) 1646.3N 05526.1E
P648	KOTA KINABALU JAKARTA	
P751	(ADEN) ANGAL 1614N 06000E MUMBAI	
P756	MALE MEDAN	
P761	CHENNAI PORT BLAIR	
P762	DAWEI PORT BLAIR COLOMBO	
P880	IGEVO 03636.29S 16300.00E SLOPE HILL VOR 04459.03S 16846.57E	
P895	IGAMA 134105.00N 0715958.00E AKLON 112110.00N 0745424.00E COCHIN GUTEG 091100.00N 0773154.00E BIKOK 81706.00N 0783555.00E (APAC15/01 - ATS)	
P901	IKELA 1839.7N 11214.7E CHEUNG CHAU	

UPPER ATS ROUTES

UB467	YEDINKA VELTA 4529N 13710E TEKUK 4241N 13527.4E NULAR 4059.2N 13411E (KANSU) 3838.0N 13228.5E
-------	---

Note 1: Acronyms used for route names are only intended as a rough guide to the location of the routes. They are explained below:

IND—India
SEA—South East Asia
SCS—South China Sea
PHI—Philippines
THA—Thailand
TPE—Taipei
PRD—Pearl River Delta
KAB—Kabul
IDO—Indonesia
COL—Colombo
CHA—China
IATA—earlier IATA requested routes in China
WPC—West Pacific Area

Note 2: Route names in parenthesis refer to the original names from an earlier route catalogue. They are renamed following consolidation of China routes and ARNR TF 3 meeting.

Chapter 1: South Asia

(referred to: SAIOACG, BOBASIO, ASIOACG as appropriate for review)

ATS ROUTES	SIGNIFICANT PTS	COORDINATES	FIR	REMARKS
IND 1	BBS BPL	N2014.6 E08548.8 N2317.0 E07720.2	KOLKATTA MUMBAI	
IND 7	PRA SERKA KAMAR BIRJAND	N2401.8 E07445.0 N2951.0 E06615.0 N3239.0 E06044.0 N3258.3 E05912.0	MUMBAI DELHI KABUL TEHERAN	N877 Extension
IND 09	TELEM BHU RKT BBB	N2407 E068 46 N2316.5 E06940.0 N2218.8 E07046.7 N1905.2 E072 52.5	MUMBAI	New Entry 1/1/13
IND 10	AAE MORVI RASKI	N2304.1 E07237.7 N2249.0 E07050.0 N2303.5 E06352.0	MUMBAI	New Entry 1/1/13
PAK 01	KC MELOM	N2454.6 E06710.6 N2505.0 E06632.0	KARACHI	New Entry 1/1/13
PAK02	INDEK CHG	N3246.0 E07316.0 N3040.1 E07648.3	LAHORE DELHI	New Entry M890 extension 1/1/13
THA 1	KORAT DAWEI	N1455.0 E10208.4 N1405.9 E09812.2	BANGKOK YANGON	
IDO 1	SJ MABIX	N0113.4 E10351.3 N0316.0 E09450.9	SINGAPORE JAKARTA	
COL 1	KAT TNV	N0709.7 E07952.1 S1842.2 E04731.1	COLOMBO MADAGASCA R	
IND 8	VABB APANO WPT "X"	Details in chart	MUMBAI KARACHI	2 Route Options
HIMALAY A 1	KOLKATA NEPALGUNJ INDEK	2238.7N 08827.2E 2806.1N 08139.1E 3246N 7316E	KOLKATA KATHMANDU LAHORE	Moved from Chapter 4. Route requested by Nepal
HIMALAY A 2	KATHMANDU BAGHDOGRA GUWAHATI SILCHAR IMPHAL KUNMING	2740.5N 08521.0E 2641.3N 08819.8E 2606.1N 09135.3E 2454.8N 09258.9E 2446.0N 09354.5E 2501N 10244E	KATHMANDU KOLKATA KOLKATA KOLKATA KOLKATA KUNMING	Moved from Chapter 4. Route requested by Nepal
HIMALAY A 3	LELAX QIM FKG	N3223.5 E07737.9 N3809.1 E08532.2 N4410.0 E08759.0	DELHI URUMQI	New Entry 10/1/13

IRAN1	a. ALROT- BIRJAND-SOKIR -NH b. ALROT- BIRJAND- SOKIR-GASIR	?	IRAN KABUL PAKISTAN	Requested by IRAN and amended by IATA at SAIAOCG/3 Mtg.
P173	TAPIS – DAVET westbound only		Turkmenistan Afghanistan	RDGE14.02 6 Implementati on date 01 SEP 2014

ATS ROUTE NAME: *IND10*

REQUESTED BY: IATA

Date: 01/01/2013

ENTRY/EXIT POINT
AAE- RASKI

CHART

ROUTE DESCRIPTION
AAE (Ahmadabad) –
MORVI- RASKI



FLIGHT LEVEL BAND
29000 – 46000

PRIORITY:
HIGH/MED/LOW
HIGH

Action Required	IATA
	ICAO

Saving	Per flight	Annual potential
Mileage / Time	80 nm / 9min	
Fuel	765 Kg	8,800 Ton
CO ₂	2409 kg	27,700 Ton
No _x		
SO ₂		

Remarks: Facilitates From / To Ahmadabad Middle East and overflying traffic between Far East Asia to Middle East.

Potential City Pairs: AMD, DAC, HKG, PVG, BJS / Middle East

ATS ROUTE NAME: COL 1

REQUESTED BY: IATA

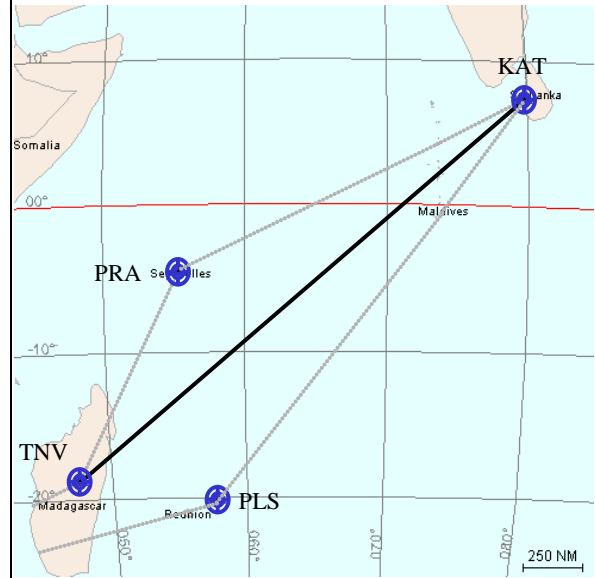
ENTRY/EXIT POINT
KAT / TNV

ROUTE DESCRIPTION
KAT .. TNV (ANTANANARIVO)

FLIGHT LEVEL BAND
28000 – 46000 feet

PRIORITY: HIGH/MED/LOW

CHART



Action Required	IATA
	ICAO

Saving	Per flight	Annual
Mileage / Time	130nm /16 min	
Fuel	2110kg	770,000kg
CO ₂	6,500kg	2,370 tonnes
No _x		

Remarks: This proposal supports traffic between THA/HKG/ South China and Southern Africa. A proposal already exists to establish a User Preferred Route (UPR) geographic area which will support the same traffic flow however this proposal needs to be retained in the short term.

Potential City Pairs:

ATS ROUTE NAME: *Himalaya 3*

REQUESTED BY: IATA

Date: 10 January 2013

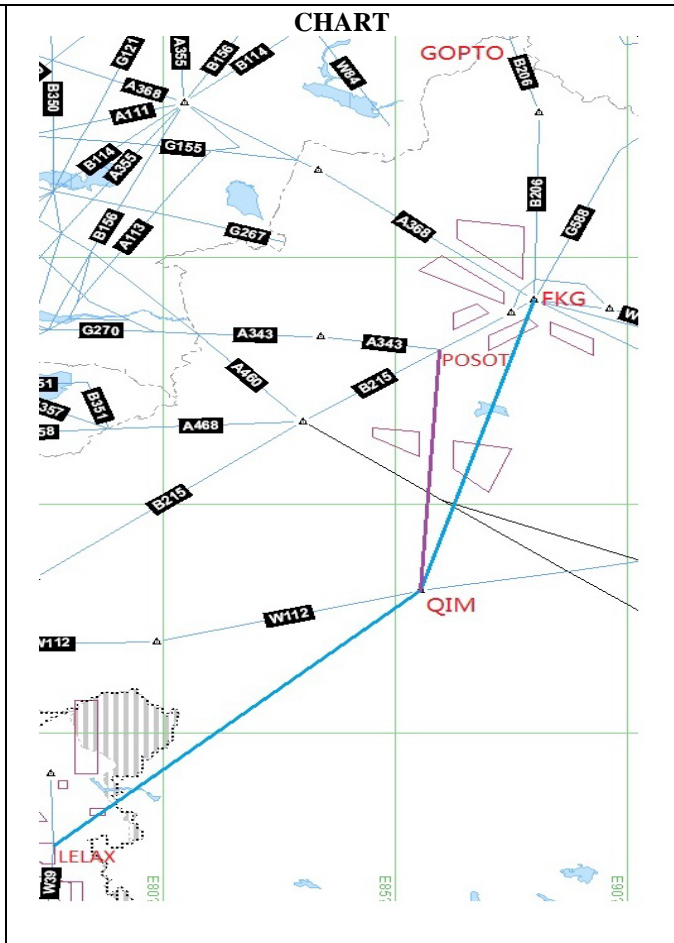
ENTRY/EXIT POINT
LELAX-QIM-FKG
(Or LELAX-QIM-POSOT-FKG)

Connecting to FKG-TAI-GOPTO-LANBI

ROUTE DESCRIPTION
LELAX direct to QIM over the Himalaya to support a new route from India into China connecting to Russia onwards polar / trans polar gateways.

FLIGHT LEVEL BAND:

PRIORITY:
HIGH



Action Required	IATA
	ICAO

Saving	Per flight	Annual
Mileage / Time	257NM / 23 mins	
Fuel	3500 kgs	1,265 Ton
CO ₂	11 Tons	4,000 Ton
No _x		

Remarks: New 787 aircraft equipped with more than the standard cabin oxygen supply capable of operating at higher altitude longer in the event of depressurization over the Himalayas.

Potential City Pairs: India -North America

ATS ROUTE NAME: IRAN 1

Requested by : Iran

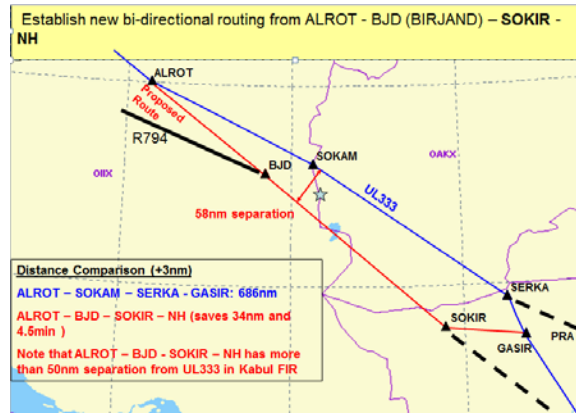
ENTRY/EXIT POINT
XXXXX

ROUTE DESCRIPTION

- a. ALROT-BIRJAND-SOKIR -NH
- b. ALROT-BIRJAND-SOKIR-GASIR

FLIGHT LEVEL BAND

PRIORITY: HIGH/MED/LOW



CHART

Action Required	States to coordinate implementation.
	.

Benefit		
Cost		
Fuel Saving		
Emission	CO ₂	
	NO _x	

Remarks: Requested by IRAN and amended by IATA at SAIOACG /3 meeting.

ATS ROUTE NAME: RDGE 14.026

Requested by : TKM

<p>ENTRY/EXIT POINT</p> <p>ROUTE DESCRIPTION</p> <p>Implementation of uni-directional westbound ATS route: P173 TAPIS - DAVET</p> <p>FLIGHT LEVEL BAND</p> <p>31000 – 43000 ft</p> <p>PRIORITY: HIGH/MED/LOW</p> <p>PLANNED IMPLEMENTATION DATE</p> <p>01 September 2014</p>	<p>CHART</p>
--	---------------------

Action Required	IATA
	ICAO

Saving	Per flight	Annual
Mileage / Time		
Fuel		
CO ₂		
No _x		

Remarks:

Potential City Pairs:

Chapter 2: Southeast Asia

(referred to: SEACG for review)

ATS ROUTES	SIGNIFICANT PTS	COORDINATES	FIR	REMARKS
SEA 2	DANANG SYX	N1603.2 E10811.9 N1818.4 E10910.4	HOCHIMINH SANYA	Retain proposal for long-term planing (Viet Nam). Retention discussed at SEACG/22
SEA 5	STUNG TRENG ĐANANG	N1331.5 E10600.9 N1603.2 E10811.9	PNOMPENH HOCHIMINH	Moved from Chapter 5 part A SEACG/22 (Diagram was deleted)
SEA 6	PAKSE ASSAD	N1511.8 E10544.5 N1820.5 E10740.9	VIENTIANE ASSAD	SEACG/22 (Diagram was deleted)
SEA 10	LENKO QUNGI SAMUI	N1507.0 E10848.0 N0932.8 E10003.7	SANYA HOCHIMINH PNOMPENH BANGKOK	New chart provided by IATA QUNGI-LENKO
SEA 12	ROT HUGUANG	N1607.0 E10346.7 N2107.9 E11020.2	HOCHIMINH GUANGZHOU	
SEA 13	ASSAD SEYX EPKAL MAVRA SAN		YANGON VIENTIANE HANOI MANILA	New Request SEACG/22
SCS 1	DAMEL CH	N1358.7 E11136.4 N2213.2 E11401.8	HOCHIMINH HONGKONG	
SCS 2	VEPAM CH	N1358.0 E11000.0 N2213.2 E11401.8	HOCHIMINH HONGKONG	
SCS 4	VKL CONSON	N0243.5 E10144.3 N0843.8 E10637.9	LUMPUR HOCHIMINH	(Diagram was deleted)
SCS 5	EXOTO ĐAMVO MELAS LUSMO	N1521.5 E11103.0 N1106.5 E10932.7 N0705.3 E10809.2 N0333.7 E10655.6	HOCHIMINH HOCHIMINH HOCHIMINH SINGAPORE	(Diagram was deleted)
SCS 7	BRUNEI LAXOR ĐULOP	N04 52.5E11453.1 N0949.6 E11448.5 N1814.2E11432.6	KINABALU SINGAPORE HONGKONG	TO JOIN M772 AT LAXOR (Diagram was deleted)
SCS8	DULOP ELATO ENVAR DULOP KAPLI	N1814.2E11432.6 N2220.0 E11730.0 N2159.5 E11730.0 N1814.2E11432.6 N2110.0 E11730.0	HONGKONG HONGKONG HONGKONG HONGKONG HONGKONG	EITHER DULOP/ KAPLI G86, OR DULOP/ ELATO& ENVAR
SCS9	TOKON DILIS	N1142.0 E11940.5 N1431.1 E12600.1	MANILA MANILA	Moved from Chapter 5 part A

	TOKON ENDAX	N1142.0 E11940.5 N1415.0 E13000.0	MANILA MANILA	SEACG/22 reported route ENDAX – TAKON was already implemented as Z902 Regional ATS route designator to be assigned.
SCS10	PHUCAT ASISU		HO CHI MINH SINGAPORE KOTA KINABALU	
SCS11	R208 VKR BITOD		KUALA LUMPUR SINGAPORE HO CHI MINH	New request (replacing SCS4) SEAC/22
PHI 5	ENDAX VJN		MANILA	
Unnamed	NOIBAI KUNMING	2112.8N 10550.1E 2501.0N 10244.0E	HANOI KUNMING	Moved from Chapter 4. Route Requested by Vietnam Reported at SEACG/22 as having already been implemented as a domestic ATS route intercepting the regional ATS route network at a point within the Hanoi FIR Awaiting BANP Amendment.
Unnamed	NOIBAI CATBI SAMAS OR HUGUANG	2112.8N 10550.1E 2049.1N 10642.5E 2030.3N 11029.7E 2107.9N 11020.2	HANOI HANOI GUANGZHOU/ SANYA GUANGZHOU	Moved from Chapter 4. Route Requested by Vietnam Retain proposal for long-term planing (Viet Nam) Retention discussed at SEACG/22

ATS ROUTE NAME: SEA2

REQUESTED BY: IATA

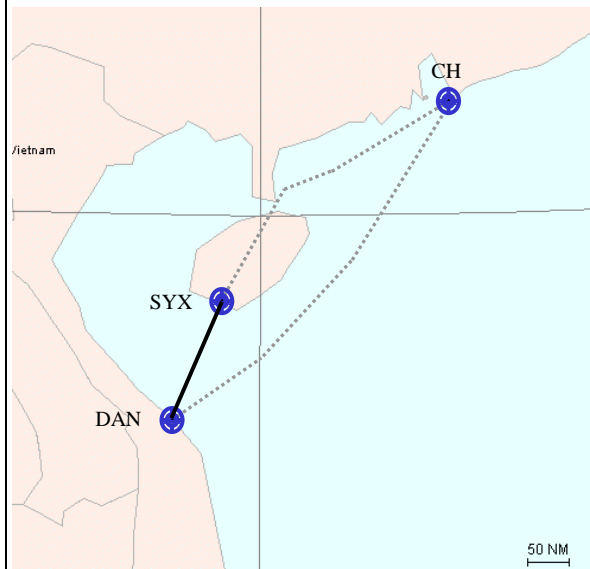
ENTRY/EXIT POINT
DAN / XXXXX / SYX

ROUTE DESCRIPTION
DAN .. SYX

FLIGHT LEVEL BAND
29000 – 46000 feet

PRIORITY: HIGH/MED/LOW

CHART



Action Required	IATA
	ICAO

Saving	Per flight	Annual
Mileage / Time	739nm/93 mins	
Fuel	12090 kg	4,412 tonnes
CO ₂	37200kg	13,578 tonnes
No _x		

Remarks: Supports traffic Southeast Asia – Hainan Island and possible alternative routing for the Pearl River Delta area.

Potential City Pairs: South East Asia - Hainan

ATS ROUTE NAME: SEA 10 Alternative route proposed from QUNGI to LENKO by IATA at SEACG/20 mtg

REQUESTED BY: IATA

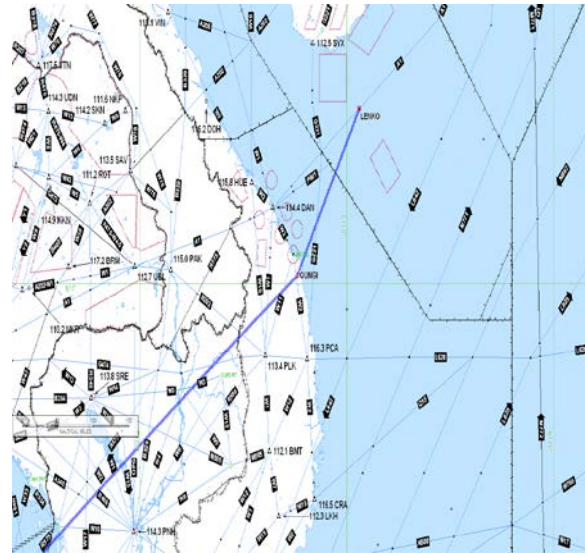
ENTRY/EXIT POINT
XXXXX

ROUTE DESCRIPTION
CAVOI and IGNIS LENKO ..
Quangngai/QUNGI .. SAMUI (SMU)

FLIGHT LEVEL BAND
28000 – 46000 feet

PRIORITY: HIGH/MED/LOW

CHART



Action Required	IATA
	ICAO

Saving	Per flight	Annual
Mileage / Time		
Fuel		
CO ₂		
No _x		

Remarks: Supports traffic from Northeast Asia to Phuket and beyond. Will require linkages to/from QUNGI as original proposed points CAVOI and IGNIS no longer exist. **IATA propose to link QUNGI to LENKO**

Potential City Pairs: Colombo/ Phuket - Pearl River Delta

ATS ROUTE NAME: SEA 12

REQUESTED BY: IATA

ENTRY/EXIT POINT
ROT - HUGUANG

ROUTE DESCRIPTION

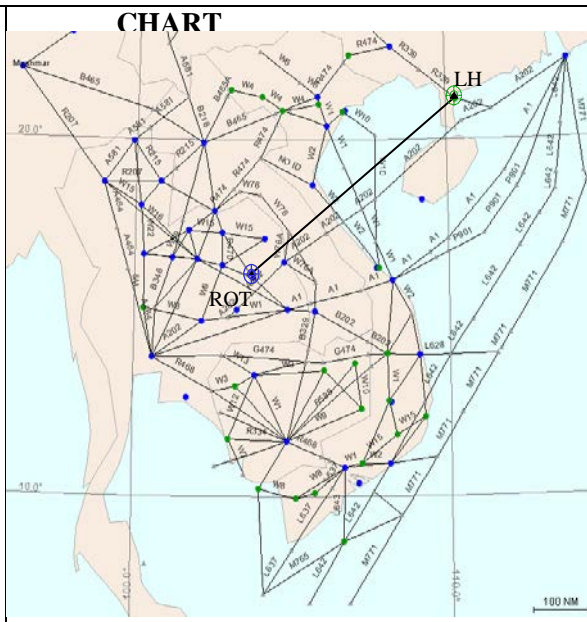
Direct ROT - HUGUANG

FLIGHT LEVEL BAND

29000 - 46000

PRIORITY: HIGH/MED/LOW

HIGH



Action Required	IATA
	ICAO

Saving	Per flight	Annual
Mileage / Time		
Fuel		
CO ₂		
No _x		

Remarks: Provide parallel to the A202 route similar to proposal for uni-directional routes proposed through Southeast Asia Route Review Task Force.

Potential City Pairs: KUL/SIN/Phnom Penh/JKT – SANYA/HKG

ATS ROUTE NAME: SEA 13

REQUESTED BY: IATA

<p>ENTRY/EXIT POINT</p> <p>ROUTE DESCRIPTION</p> <p>ASSAD SYX EPKAL MVRA SAN</p> <p>FLIGHT LEVEL BAND</p> <p>29000 - 46000</p> <p>PRIORITY: HIGH/MED/LOW</p>	<p>CHART</p>
--	---------------------

Action Required	IATA
	ICAO

Saving	Per flight	Annual
Mileage / Time		
Fuel		
CO ₂		
No _x		

Remarks: SEACG/22

Potential City Pairs:

ATS ROUTE NAME: SCS1

REQUESTED BY: IATA

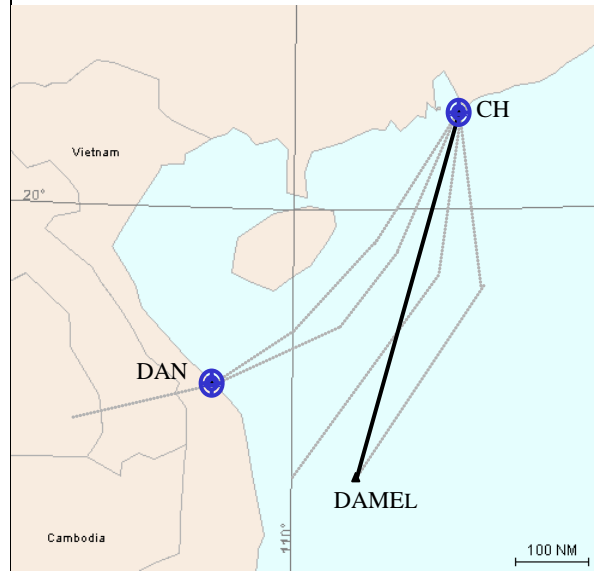
ENTRY/EXIT POINT
DAMEL / CH

ROUTE DESCRIPTION
DAMEL .. CH

FLIGHT LEVEL BAND
28000 – 46000 feet

PRIORITY: HIGH/MED/LOW

CHART



Action Required	IATA
	ICAO

Saving	Per flight	Annual
Mileage / Time	35nm / 4mins	
Fuel	568kg	207594kg
CO ₂	1750kg	638,750kg
No _x		

Remarks: Proposed route shortening for M771 into the Pearl River Delta area. Similar proposals have been made through Southeast Asia Route Review Task Force. During SEACG/19 in WP09 Hong Kong China advised they had studied the proposal for track shortening and advised the proposed change would reduce capacity of A1/P901. It would also require an extensive change in the flight route system and ATC sectors in Hong Kong FIR. However Hong Kong, China would continue to study this proposal for the implementation of RNP4/2. . (**IATA – 5/02/2013- Remains as high priority in view of the savings impact for many airlines**)

Potential City Pairs: Singapore-Pearl River Delta Airports

ATS ROUTE NAME: SCS2

REQUESTED BY: IATA

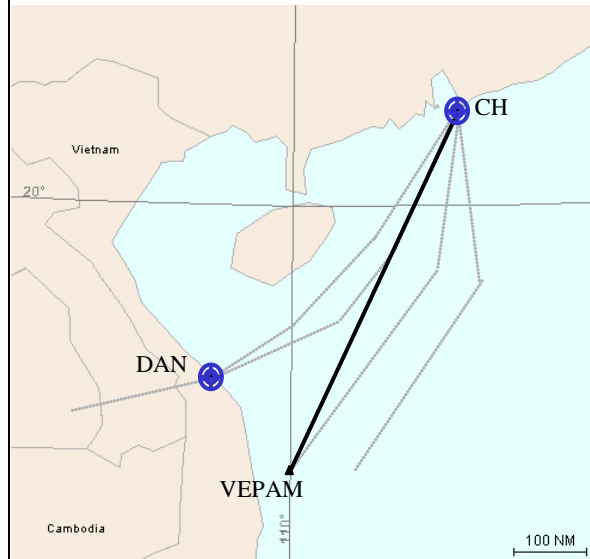
ENTRY/EXIT POINT
CH / VEPAM

ROUTE DESCRIPTION
CH .. VEPAM

FLIGHT LEVEL BAND
28000 – 46000 feet

PRIORITY: HIGH/MED/LOW

CHART



Action Required	IATA
	ICAO

Saving	Per flight	Annual
Mileage / Time	17nm/ 2 mins	
Fuel	276kg	100,831kg
CO ₂	850kg	310,250kg
No _x		

Remarks: Proposed route shortening for L642 out of the Pearl River Delta area. Similar proposals have been made through Southeast Asia Route Review Task Force. During SEACG/19 in WP09 Hong Kong China advised they had studied the proposal for track shortening and advised the proposed change would reduce capacity of A1/P901. It would also require an extensive change in the flight route system and ATC sectors in Hong Kong FIR. However Hong Kong, China would continue to study this proposal for the implementation of RNP4/2 ...(**IATA - 5/01/2013 - Remains as high priority in view of the savings impact for many airlines**)

Potential City Pairs: Singapore-Pearl River Delta Airports

ATS ROUTE NAME: SCS 8

REQUESTED BY: IATA

ENTRY/EXIT POINT

1. DULOP / ELATO(ENVAR)

2. DULOP / KAPLI

ROUTE DESCRIPTION

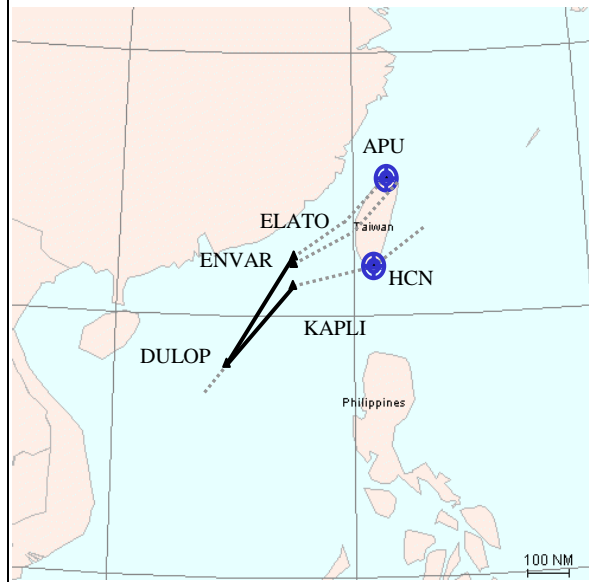
DULOP .. ELATO (A1)/ENVAR (M750) or
DULOP .. KAPLI (G86)

FLIGHT LEVEL BAND

28000 – 46000 feet

PRIORITY: HIGH/MED/LOW

CHART



Action Required	IATA
	ICAO

Saving	Per flight	Annual
Mileage / Time	a.DULOP/ENVAR 140nm/17.5min b.DULOP/KAPLI 238nm/ 30min	
Fuel	a.2275kg b.3867kg	a.830,000kg b.1,411 tonnes
CO ₂	a. 7000kg b.11,900kg	a.2,555tonnes b.4,343 tonnes
No _x		

Remarks: Supports traffic Northeast Asia/Southeast Asia. Potentially problematic as will impact Touth China Sea’s traffic arrangements. IATA to review. During SEACG/19 in WP09 Hong Kong China advised they had studied the proposal for track shortening and advised that allowing flights to proceed from M771 DUMOL to ELATO/ENVAR/KAPLI will likely create a bottle neck at these points and result in flights not getting optimum levels or increase ground delay to departures from Hong Kong and Macao to East Asia. However Hong Kong, China would continue to study this proposal.

Potential City Pairs: SEAsia-North Asia Airports

ATS ROUTE NAME: SCS 9
REQUESTED BY: IATA

<p>ENTRY/EXIT POINT</p> <ol style="list-style-type: none"> 1. ENDAX (FIR Boundary between Oakland and Manila FIRs) or DILIS on G467 2. TOKON on M767 (Manila FIR) <p>ROUTE DESCRIPTION ENDAX .. TOKON or DILIS .. TOKON</p> <p>FLIGHT LEVEL BAND 28000 – 46000 feet</p> <p>PRIORITY: HIGH/MED/LOW (Immediate request with DILIS – TOKON)</p>	<p>CHART</p>
--	---------------------

Action Required	IATA
	ICAO

Saving	Per flight	Annual
Mileage / Time	a.TOKON-DILIS 45nm/ 5.5in b.TOKON-ENDAX 110nm/14min	
Fuel	a.731kg b. 1788kg	a.266,906kg b.652,440kg
CO ₂	a.2250kg b.5,500kg	a.821,250kg b.2,007 tonnes
No _x		

Remarks this route has already been implemented as domestic route Z902, except that it is not a domestic route. It should be a regional route but has not been entered into the BANP and consultation with Oakland is unclear.

Potential City Pairs: SEA –San Francisco/Los Angeles

ATS ROUTE NAME: SCS 10 (Propose Route designator R321)

REQUESTED BY: IATA

Date: 25 June 2012

(ATM/AIS/SAR/SG-22)

ENTRY/EXIT POINT

Phu CAT (PCA) - ASISU

ROUTE DESCRIPTION

PCA to ASISU

FLIGHT LEVEL BAND

PRIORITY:

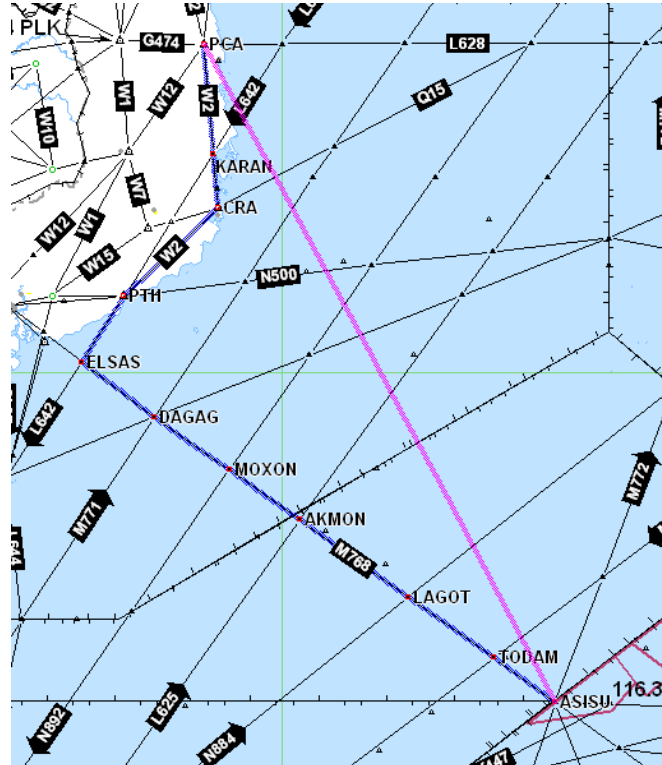
HIGH

(VN commencing SGN-SYD service in October 2012)

Plan for 3 flights per week....

Potential for other airlines to use?

CHART



Action Required	IATA
	ICAO

Existing 692.9

New PCA-ASISU = 541.6

Saving	Per flight	Annual
Mileage / Time	151nm / 22 mins	
Fuel	1827kg	kg
CO ₂	5664kg	kg
No _x		

Remarks

Potential City Pairs: SGN-SYD, any others

ATS ROUTE NAME: SCS 11

REQUESTED BY: IATA from SEACG/22

ENTRY/EXIT POINT	CHART
ROUTE DESCRIPTION R208 – VKR - BITOD	
FLIGHT LEVEL BAND	
PRIORITY:	

Action Required	IATA
	ICAO

Saving	Per flight	Annual
Mileage / Time		
Fuel		kg
CO ₂		kg
No _x		

Remarks

Potential City Pairs: Kuala Lumpur, Singapore, Ho Chi Minh

ATS ROUTE NAME: PHI 05 (Propose Route ENDAX-VJN)

REQUESTED BY: IATA

Date: 25 June 2012

(ATM/AIS/SAR/SG-22)

ENTRY/EXIT POINT
ENDAX-VJN

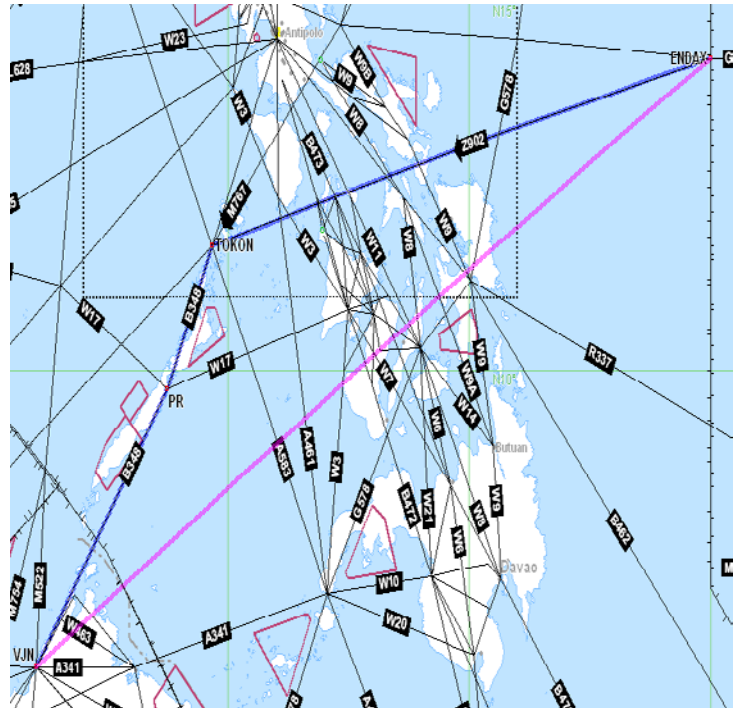
ROUTE DESCRIPTION

FLIGHT LEVEL BAND

PRIORITY:
High/Medium/Low

ENDAX-VJN 964.5NM
ENDAX-TOKON-PR-VNJ
1033.7NM

CHART



Action Required	IATA
	ICAO

Saving	Per flight	Annual
Mileage / Time	69.2nm / 8.65 mins	
Fuel	836kg	kg
CO ₂	2592kg	kg
No _x		

Remarks

Potential City Pairs:

ATS ROUTE NAME: Unnamed 1

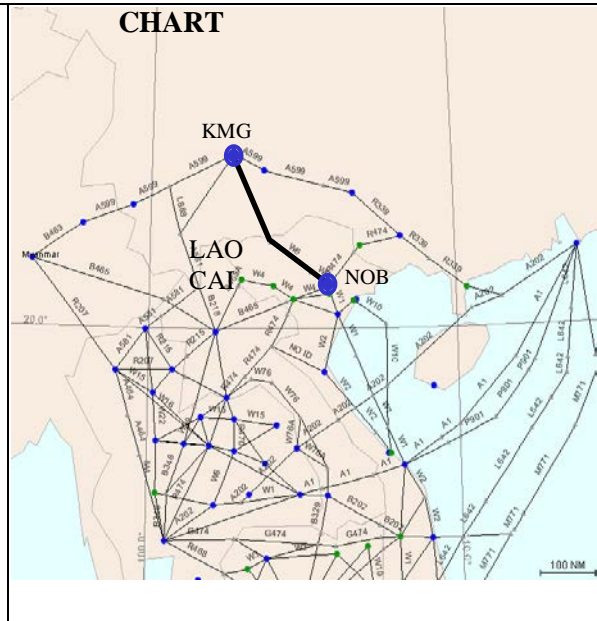
Requested by : Vietnam

ENTRY/EXIT POINT
XXXXX

ROUTE DESCRIPTION
Noibai (NOB) .. LAOCAI .. Kunming (KMG)

FLIGHT LEVEL BAND
28000 – 46000 feet

PRIORITY: HIGH/MED/LOW



Action Required	States to coordinate implementation.
	ICAO to circulate proposal for deletion from BANP.

Benefit		
Cost		
Fuel Saving		
Emission	CO ₂	
	NO _x	

Remarks: Because of small traffic demand and cost/benefit considerations, this route is impossible and can not be implemented at present.

Awaiting BANP Amendment

ATS ROUTE NAME: Unnamed 2

Requested by : Vietnam

ENTRY/EXIT POINT
XXXXX

ROUTE DESCRIPTION

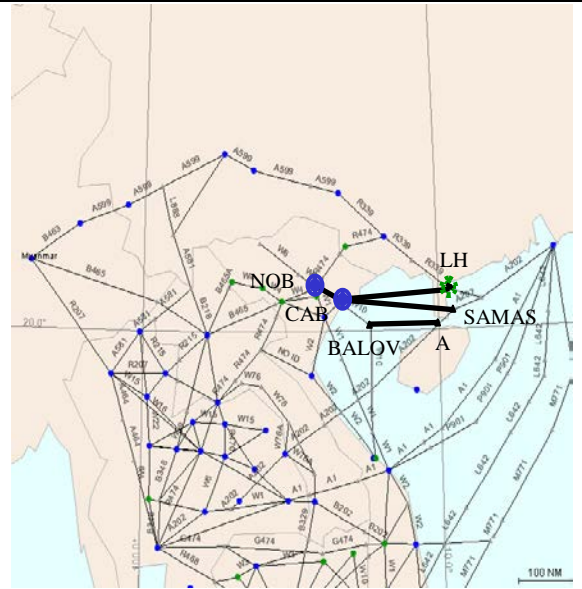
Two Options:

- A) Noibai (NOB) .. Catbi (CAB) .. SAMAS
- B) Noibai (NOB) .. Catbi (CAB) .. Huguang (LH)

FLIGHT LEVEL BAND

28000 – 46000 feet

PRIORITY: HIGH/MED/LOW



Action Required	States to coordinate to submit proposal for deletion of the requirement.
	ICAO to circulate proposal for deletion from BANP.

Benefit	
Cost	
Fuel Saving	
Emission	CO ₂
	NO _x

Remarks: Because of small traffic demand and cost/benefit considerations, this route is impossible and can not be implemented at present.

Chapter 3: East Asia/Russian Federation

**(referred to: Russia/East Asian States, CPWG or EATMCG
as appropriate for review)**

ATS ROUTES	SIGNIFICANT PTS	COORDINATES	FIR	REMARKS
PHI 1	MIA CAB MEVIN	N1430.5 E12101.3 N1528.9 E12101.5 N2100.0 E12233.0	MANILA MANILA MANILA	
PHI 3	TKK MUMOT	N2308.1 E12012.4 N1901.7 E11747.4	TAIPEI MANILA	
PHI 4	HCN AKOTA	N2155.7 E12050.6 N1627.7 E11712.4	TAIPEI MANILA	
TPE 1	APU MIKES	N2510.6 E12131.3 N2935.2 E12544.9	TAIPEI NAHA	
CHA 1 (CHA 5)	YNC GUPAD CGO SB	N3819.4 E 10623.8 N3618.7 E11028.4 N3430.9 E11350.6 N3150.4 E11714.0	LANZHOU LANZHOU WUHAN SHANGHAI	
CHA 2 (CHA 7)	KUQA CHW	N4143.0 E08300.0 N3951.0E09821.0	URUMQI LANZHOU	
CHA 3 (CHA 9A)	FKG OMBON	N4410.0 E08759.0 N3238.5 E10420.0	URUMQI KUNMING	
CHA 4 (CHA 10A)	MORIT NSH POU	N4202.0 E10249.0 N3319.1 E10818.7 N2301.2 E11311.4	LANZHOU LANZHOU GUANGZHOU	
CHA 5 (CHA 11A)	YIN INTIK	N2412.4E11324.6 N4340.8 E11154.1	GUANGZHOU BEIJING	
CHA 6 (CHA14)	OMBON NSH OBLIK SB (LUOGANG)	N3238.5 E10420.0 N3319.1 E10818.7 N3218.0 E11432.0 N3146.8 E11718.1	KUNMING LANZHOU WUHAN SHANGHAI	
CHA 7 (CHA 15)	KANSU KICHA CGQ HLD	N3838.0 E13228.5 N4041.0 E12911.5 N4338.0 E12400.5 N4912.1 E11949.4	PYONGYANG PYONGYANG SHENYANG SHENYANG	
CHA 8 (CHA16)	SCH HTN CHW	N3825.7 E07714.4 N3702.2 E07952.3 N3951.0E09821.0	URUMQI URUMQI LANZHOU	
CHA 9 (CHA17)	YBL SANLI	N3925.7 E10246.3 N3200.0 E100.00.0	LANZHOU KUNMING	

CHA 10 (CHA18)	ARGUK DALIAN HEFEI BEMAG	N4753.0E13439.5 N3857.6 E12130.8 N3146.8 E11718.1 N2601.1 E11400.1	SHENYANG SHENYANG SHANGHAI GUANGZHOU	
CHA 11 (CHA19)	DALIAN XJT	N3857.6 E12130.8 N3557.7 E12014.4	SHENYANG SHANGHAI	
CHA 12	UNWW WXI	N3621.8 E11455.0	SHANGHAI	
IATA2	OMBON RO	N3238.5 E10420.0 N2546.1 E10936.4	KUNMING GUANGZHOU	
IATA3	OMBON SB (LUOGANG)	N3238.5 E10420.0 N3146.8 E11718.1	KUNMING SHANGHAI	
JAP 1	TIC R583 BISIS APITO		FUKUOKA INCHOEN	
CHA13	FENGNING (GM) – DAILAN (DBL)			
FE0008 ex APAC RUS5	SIBIR- new WP- new EKVIK ARLAS- new WP- new EKVIK		KHABAROVSK FUKUOKA	
FE0021 ex APAC RUS4	AVGOK- GTC		KHABAROVSK FUKUOKA	
FE0034 ex APAC RUS9	RITEK- new WP- HLD		KHABAROVSK SHENYANG	
FE0032	TOPAZ- SCH or TOPAZ- HTN		URUMQI TASHKENT	
FE0054	RIVAT- GUMSU		KHABAROVSK PYONGYANG	
FE0055	NULAR- GUMSU		KHABAROVSK PYONGYANG	
FE0022 ex APAC RUS7	DIKUT- SANAR or DIKUT- SAMON		KHABAROVSK PYONGYANG FUKUOKA	
FE0044	Withdrawal R452 KICHA-SESUR-		KHABAROVSK PYONGYANG	

	TERNI			
FE0045	Withdrawal B355 BG-DIKUT- GAMOV-SESUR		KHABAROVSK PYONGYANG	
FE0046	Withdrawal B124 DIKUT-VATIS- TERNI		KHABAROVSK PYONGYANG	
FE0047	Withdrawal G711 AGITA-RIVAT		KHABAROVSK PYONGYANG	
FE0048	Withdrawal G721 VATIS-AGITA- RORIM		KHABAROVSK PYONGYANG	
FE0049	New B356 KICHA- new WP- KN		KHABAROVSK PYONGYANG	
FE0050	New B355 BG-VATIS- TERNI-new WP KICHA		KHABAROVSK PYONGYANG	
FE0051	GUMSU- new WP		KHABAROVSK PYONGYANG	
FE0052	New WP- GUMSU		KHABAROVSK PYONGYANG	
FE0053	New G711 BISUN-TERNI- RIVAT		KHABAROVSK PYONGYANG	
FE0056	RIVAT- new WP-		KHABAROVSK PYONGYANG FUKUOKA	
FE0031 ex APAC RUS11	SIMLI- new WP- BISUN		KHABAROVSK SHENYANG	
FE0030	new WP- AMERA- WZ		KHABAROVSK SHENYANG	
FE0017 ex APAC RUS12	WZ-along G494- SIMLI		KHABAROVSK SHENYANG	
FE0029 ex APAC RUS13	SIMLI- new WP- UGABI		KHABAROVSK SHENYANG	
FE0035 ex APAC RUS15	UGABI- new WP- AMERA- WZ		KHABAROVSK SHENYANG	
FE0041 Ex APAC RUS6	NALEB-SIMLI- HEK-new WP- BISUN-SANAR- ARLAS-new WP- new EKVIK		KHABAROVSK SHENYANG FUKUOKA	

	(eastbound) new EKVIK-new WP-ARLAS- SANAR-BISUN- new WP-AMERA- WZ-NALEB (westbound)			

ATS ROUTE NAME: PHI 1

REQUESTED BY: IATA

ENTRY/EXIT POINT

ROUTE DESCRIPTION

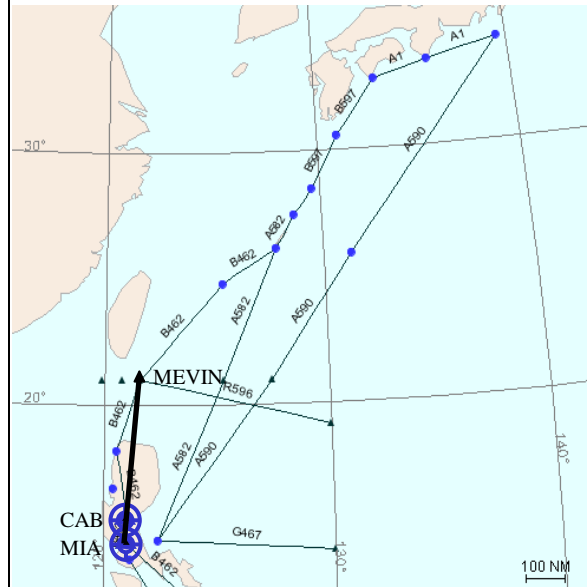
Manila (MIA) .. MEVIN or
Cabanatuan (CAB) .. MEVIN

FLIGHT LEVEL BAND

28000 – 46000 feet

PRIORITY: HIGH/MED/LOW

CHART



Action Required	IATA
	ICAO

Saving	Per flight	Annual
Mileage / Time	11nm/1.5min	
Fuel	179kg	59,300kg
CO ₂	550kg	200,750kg
No _x		

Remarks: Supports traffic between Manila and Japan/North America.

Potential City Pairs: Philippines-Japan/North America

ATS ROUTE NAME: PHI 3

REQUESTED BY: IATA

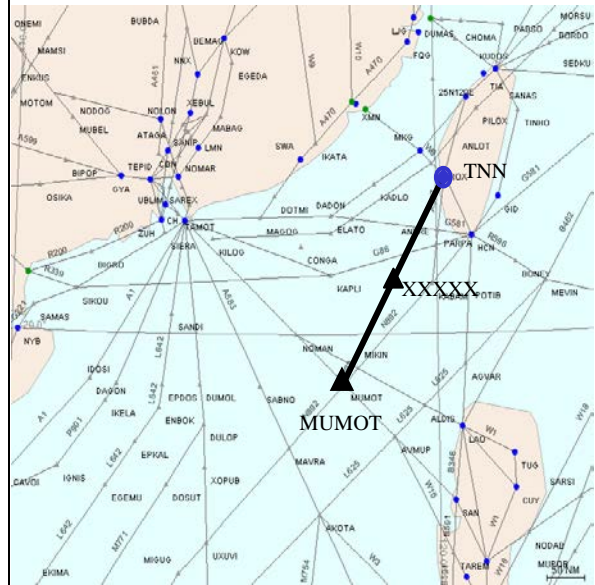
ENTRY/EXIT POINT
XXXXX

ROUTE DESCRIPTION
Shikang (TNN) ... XXXXX ... MUMOT

FLIGHT LEVEL BAND
29000 - 46000

PRIORITY: HIGH/MED/LOW
HIGH

CHART



Action Required	IATA
	ICAO

Saving	Per flight	Annual
Mileage / Time		
Fuel		
CO ₂		
No _x		

Remarks: Supports traffic from TNN to Southeast Asia

Potential City Pairs:

ATS ROUTE NAME: PHI 4

REQUESTED BY: IATA

ENTRY/EXIT POINT
XXXXX

ROUTE DESCRIPTION
AKOTA... XXXXX ... Hengchun (HCN)

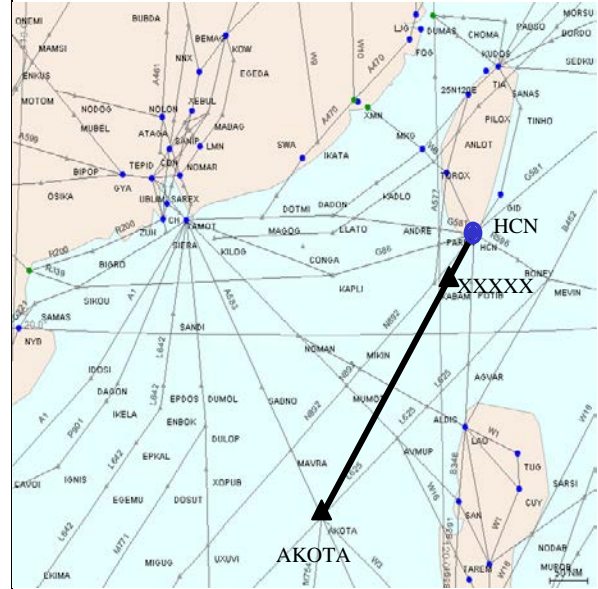
FLIGHT LEVEL BAND

29000 - 46000

PRIORITY: HIGH/MED/LOW

HIGH

CHART



Action Required	IATA
	ICAO

Saving	Per flight	Annual
Mileage / Time		
Fuel		
CO ₂		
No _x		

Remarks: Supports traffic from Southeast Asia to HCN

Potential City Pairs:

ATS ROUTE NAME: TPE 1

REQUESTED BY: IATA

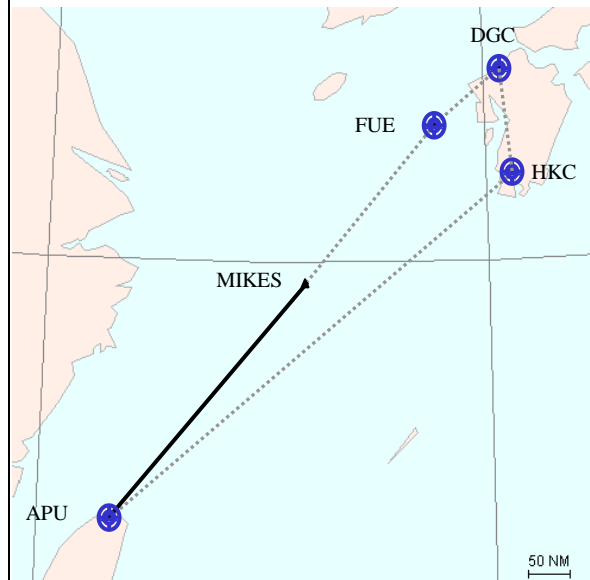
ENTRY/EXIT POINT
APU / XXXXX / MIKES

ROUTE DESCRIPTION
APU- MIKES

FLIGHT LEVEL BAND
28000 – 46000 feet

PRIORITY: HIGH/MED/LOW

CHART



Action Required	IATA
	ICAO

Saving	Per flight	Annual
Mileage / Time	40nm/ 5min	
Fuel	650kg	237,000kg
CO ₂	2,000kg	730,000kg
No _x		

Remarks: Supports traffic between APU and Japan.

Potential City Pairs: SEA/HKG/TPE-Fukuoka

ATS ROUTE NAME: CHA 1 (Renumbered from CHA5)

REQUESTED BY: IATA

ENTRY/EXIT POINT

ROUTE DESCRIPTION

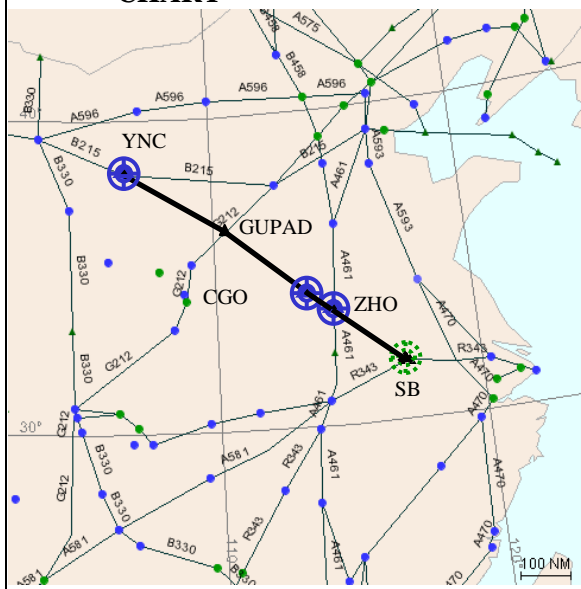
Yinchuan (YNC) .. GUPAD .. Zhengzhou (CGO) .. Zhoukou (ZHO) .. Luogang (SB)

FLIGHT LEVEL BAND

8400 – 15000 meters

PRIORITY: HIGH/MED/LOW

CHART



Action Required	IATA
	ICAO

	Per flight	Annual
Saving Mileage / Time		
Fuel		
CO ₂		
No _x		

Remarks

Potential City Pairs: Europe-Shanghai

ATS ROUTE NAME: CHA2 (Renumbered from CHA 7)

REQUESTED BY: IATA

<p>ENTRY/EXIT POINT</p> <p>ROUTE DESCRIPTION Kuqa (KCA) .. Jiayuguan (CHW)</p> <p>FLIGHT LEVEL BAND 8400 – 15000 meters</p> <p>PRIORITY: HIGH/MED/LOW</p>	<p>CHART</p>
---	---------------------

Action Required	IATA
	ICAO

Saving	Per flight	Annual
Mileage / Time	93nm/ 12min	
Fuel		
CO ₂		
No _x		

Remarks: There are existing routes between KCA and CHW. Direct route is impossible.

Potential City Pairs: Middle East/Pakistan-China/Korea/Japan

ATS ROUTE NAME: CHA 3 (Renumbered from CHA 9A)

REQUESTED BY: IATA

<p>ENTRY/EXIT POINT</p> <p>ROUTE DESCRIPTION Fukang (FKG) .. OMBON</p> <p>FLIGHT LEVEL BAND 8400 – 15000 meters</p> <p>PRIORITY: HIGH/MED/LOW</p>	<p style="text-align: center;">CHART</p>
--	---

Action Required	IATA
	ICAO

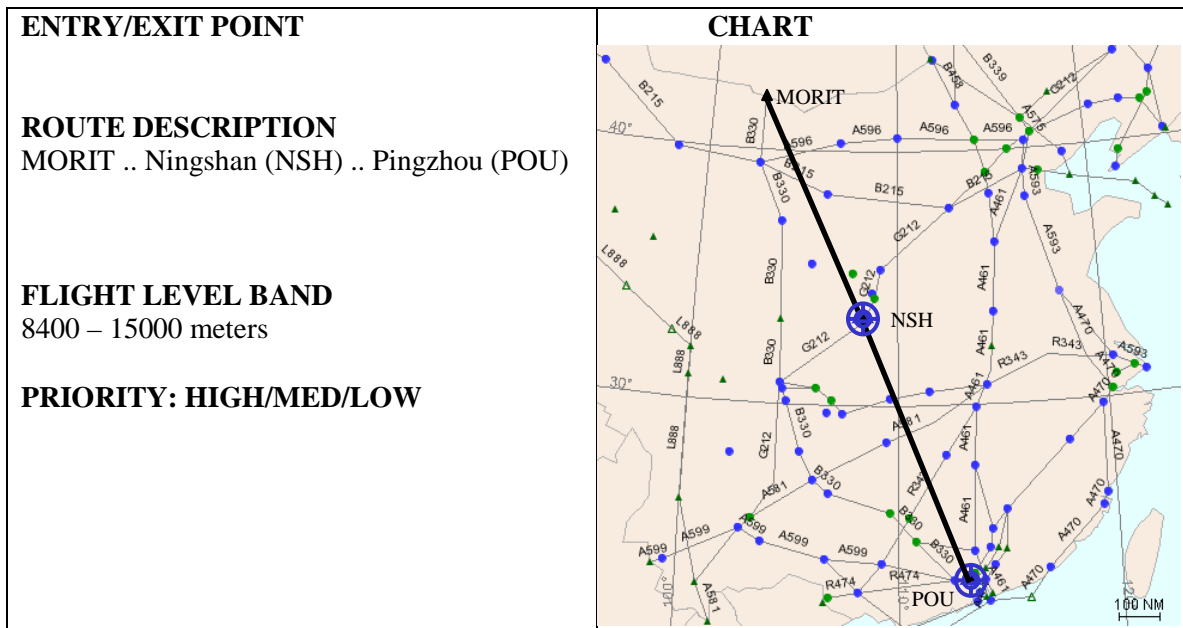
Saving	Per flight	Annual
Mileage / Time	123nm/ 15.5min	
Fuel	2000kg	730,000kg
CO ₂	6,150kg	2,245 tonnes
No _x		

Remarks: This direct route is impossible and can not be implemented at present.

Potential City Pairs: Europe/Russia-Pearl River Delta Airports

ATS ROUTE NAME: CHA4 (Renumbered from CHA 10A)

REQUESTED BY: IATA



Action Required	IATA
	ICAO

Saving	Per flight	Annual
Mileage / Time	152nm/ 19min	
Fuel	2470kg	901,000kg
CO ₂	7,600kg	2,774 tonnes
No _x		

Remarks: This direct route is impossible and can not be implemented.

Potential City Pairs: Europe Russia-Pearl River Delta Airports

ATS ROUTE NAME: CHA 5 (Renumbered from CHA 11A)

REQUESTED BY: IATA

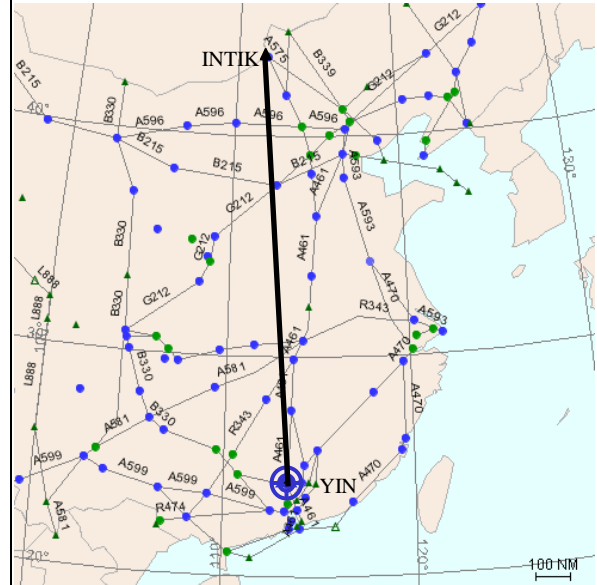
ENTRY/EXIT POINT

ROUTE DESCRIPTION
Yingde (YIN) .. INTIK

FLIGHT LEVEL BAND
8400 – 15000 meters

PRIORITY: HIGH/MED/LOW

CHART



Action Required	IATA
	ICAO

Saving	Per flight	Annual
Mileage / Time	140nm/17.5min	
Fuel	2275kg	830,000kg
CO ₂	7,000kg	2,555 tonnes
No _x		

Remarks: This direct route is impossible and can not be implemented.

Potential City Pairs: Europe/Russia –Pearl River Delta Airports

ATS ROUTE NAME: CHA 6 (Renumbered from CHA 14)

REQUESTED BY: IATA

ENTRY/EXIT POINT

ROUTE DESCRIPTION

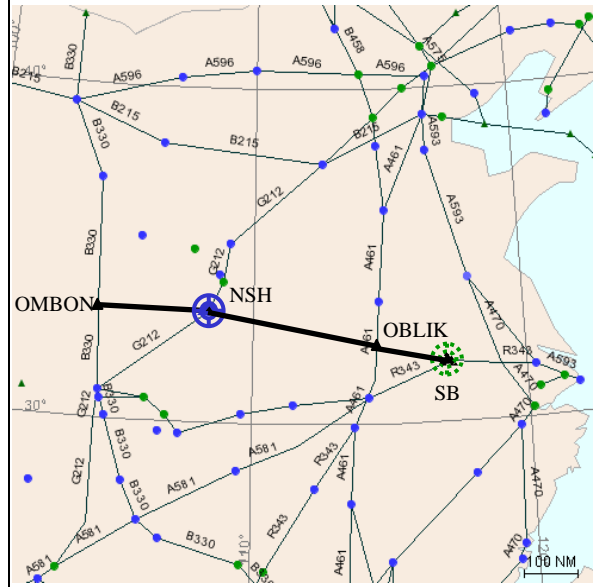
OMBON .. Ningshan (NSH) .. OBLIK ..
Luogang (SB)

FLIGHT LEVEL BAND

8400 – 15000 meters

PRIORITY: HIGH/MED/LOW

CHART



Action Required	IATA
	ICAO

Saving	Per flight	Annual
Mileage / Time		
Fuel		
CO ₂		
No _x		

Remarks: This route is impossible and can not be implemented at present.

Potential City Pairs: Europe-Shanghai

ATS ROUTE NAME: CHA 7 (Renumbered from CHA 15)

REQUESTED BY:IATA

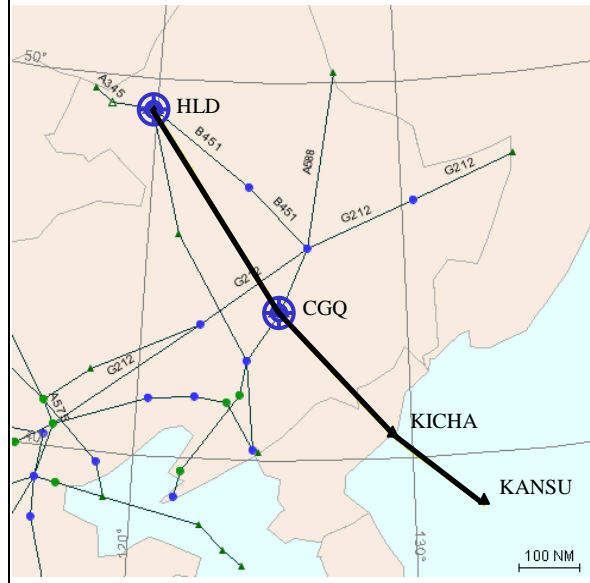
ENTRY/EXIT POINT
KANSU/XXXXX

ROUTE DESCRIPTION
KANSU .. KICHA .. Changchun (CGQ) ..
Hailar (HLD)

FLIGHT LEVEL BAND
8400 – 15000 meters

PRIORITY: HIGH/MED/LOW

CHART



Action Required	IATA
	ICAO

Saving	Per flight	Annual
Mileage / Time		
Fuel		
CO ₂		
No _x		

Remarks

Potential City Pairs: Europe-Korea /Japan

ATS ROUTE NAME: CHA 8 (Renumbered from CHA 16)

REQUESTED BY: IATA

ENTRY/EXIT POINT

ROUTE DESCRIPTION

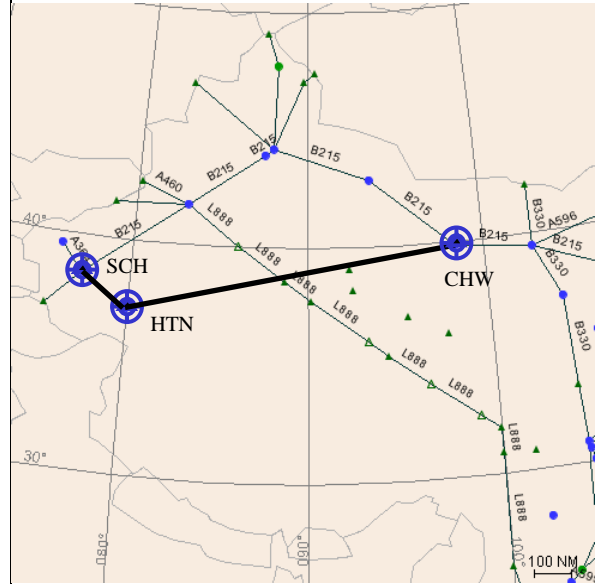
Shache (SCH) .. Hotan (HTN) .. Jiayuguan (CHW)

FLIGHT LEVEL BAND

8400 – 15000 meters

PRIORITY: HIGH/MED/LOW

CHART



Action Required	IATA
	ICAO

Saving	Per flight	Annual
Mileage / Time	69nm/9min	
Fuel	1121kg	409,000kg
CO ₂	3,450 kg	1,260 tonnes
No _x		

Remarks: Direct route between HTN and CHW is impossible and can not be implemented at present.

Potential City Pairs: Middle East /Pakistan-China/Korea/Japan

ATS ROUTE NAME: CHA 9 (Renumbered from CHA 17)

REQUESTED BY: IATA

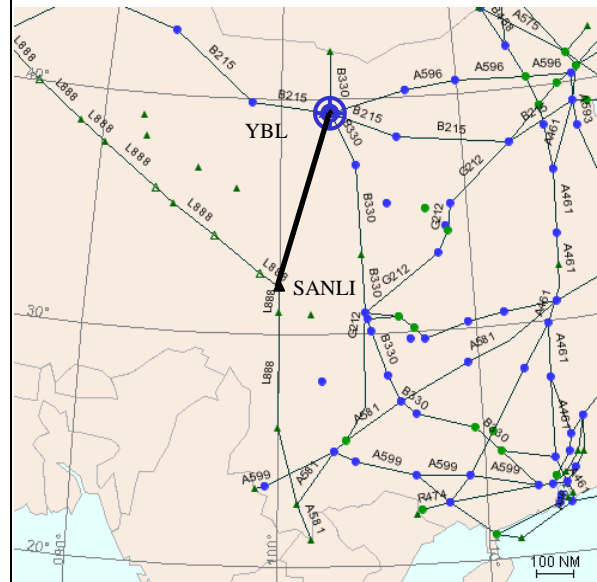
ENTRY/EXIT POINT

ROUTE DESCRIPTION
Yabrai (YBL) .. SANLI

FLIGHT LEVEL BAND
8400 – 15000 meters

PRIORITY: HIGH/MED/LOW

CHART



Action Required	IATA.
	ICAO

Saving	Per flight	Annual
Mileage / Time	48nm/ 6min	
Fuel	780kg	284,000kg
CO ₂	2,400kg	876,000kg
No _x		

Remarks: This direct route is impossible and can not be implemented at present.

Potential City Pairs: North America-SE Asia

ATS ROUTE NAME: CHA 10 (Renumbered from CHA18-formerly SE1 in CTF/2000)

REQUESTED BY: IATA

ENTRY/EXIT POINT

ARGUK/BEMAG

ROUTE DESCRIPTION

ARGUK/DALIAN/HEFEI/BEMAG

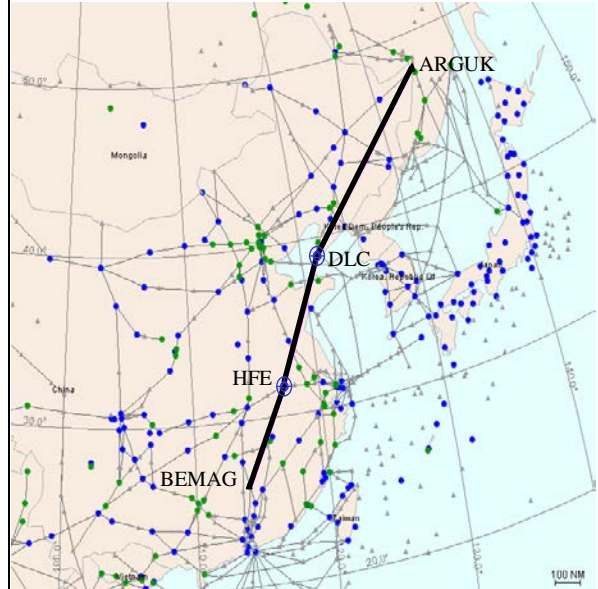
FLIGHT LEVEL BAND

8400-15000 metres

PRIORITY: HIGH/MED/LOW

HIGH

CHART



Action Required	IATA
	ICAO

Saving	Per flight	Annual
Mileage / Time		
Fuel		
CO ₂		
No _x		

Remarks: There are existing routes between ARGUK-DLC-HFE-BEMAG. Direct route between ARGUK-DLC-HFE-BEMAG is impossible.

Potential City Pairs: North America- Pearl River Delta

ATS ROUTE NAME: CHA 11 (Renumbered from CHA19 formerly SE2 in CTF/2000)

REQUESTED BY:IATA

ENTRY/EXIT POINT

DALIAN/(DLC) to XJT/B221

ROUTE DESCRIPTION

DALIAN/ XJT /B221

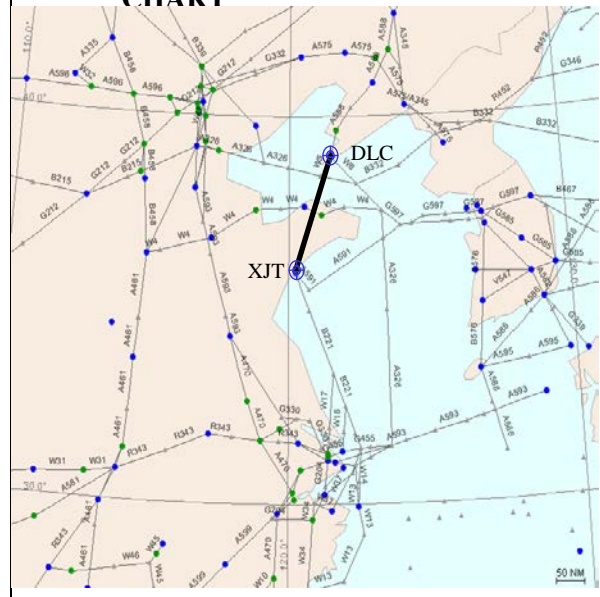
FLIGHT LEVEL BAND

8400-15000 metres

PRIORITY: HIGH/MED/LOW

HIGH

CHART



Action Required	IATA
	ICAO

Saving	Per flight	Annual
Mileage / Time		
Fuel		
CO ₂		
No _x		

Remarks: There are existing routes between DLC and XJT. Direct route is impossible.

Potential City Pairs: North America-Shanghai

ATS ROUTE NAME: CHA 12

Requested by : IATA

ENTRY/EXIT POINT

UNWW to WXI

ROUTE DESCRIPTION

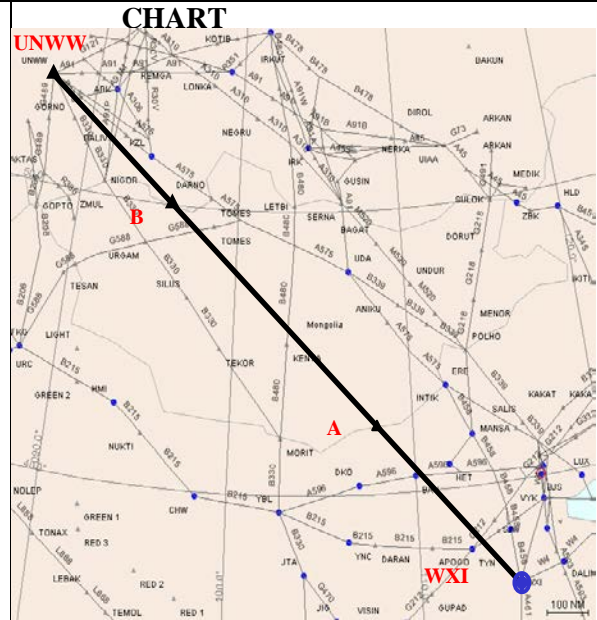
Weixian (WXI) .. A (ZBPE/ZMUB) .. B (ZMUB/UNKY) .. Novokuznetsk (UNWW)

Uni-directional

FLIGHT LEVEL BAND

28000 – 46000 feet

PRIORITY: HIGH/MED/LOW



Action Required	IATA
	ICAO

Saving	Per flight	Annual
Mileage / Time	166nm/20min	
Fuel	2620kg	956,000kg
CO ₂	8070kg	2,944 tonnes
No _x		

Remarks: This would allow following city pair flights to avoid the congested airspace around the Beijing Capital Airport.

Potential City Pairs: Pearl River Delta – Europe and Shanghai – Europe.

ATS ROUTE NAME: IATA 2

REQUESTED BY: IATA

ENTRY/EXIT POINT

ROUTE DESCRIPTION

FLIGHT LEVEL BAND
8400 – 15000 meters

PRIORITY: HIGH/MED/LOW

CHART



Action Required	IATA
	ICAO

Saving	Per flight	Annual
Mileage / Time		
Fuel		
CO ₂		
No _x		

Remarks: There are existing routes between OMBON and RO. Direct route is impossible at present.

Potential City Pairs: Europe –Pearl River Delta Airports

ATS ROUTE NAME: IATA 3

REQUESTED BY: IATA

ENTRY/EXIT POINT

ROUTE DESCRIPTION

FLIGHT LEVEL BAND

8400 – 15000 meters

PRIORITY: HIGH/MED/LOW

CHART



Action Required	IATA
	ICAO

Saving	Per flight	Annual
Mileage / Time		
Fuel		
CO ₂		
No _x		

Remarks: There are exiting routes between OMBON and SB; direct route is impossible at present.

Potential City Pairs: Europe-Shanghai

ATS ROUTE NAME: JAP 1

REQUESTED BY: IATA

Date: 25 June 2012

(ATM/AIS/SAR/SG-22)

ENTRY/EXIT POINT

TIC - APITO

ROUTE DESCRIPTION

PIC - APITO

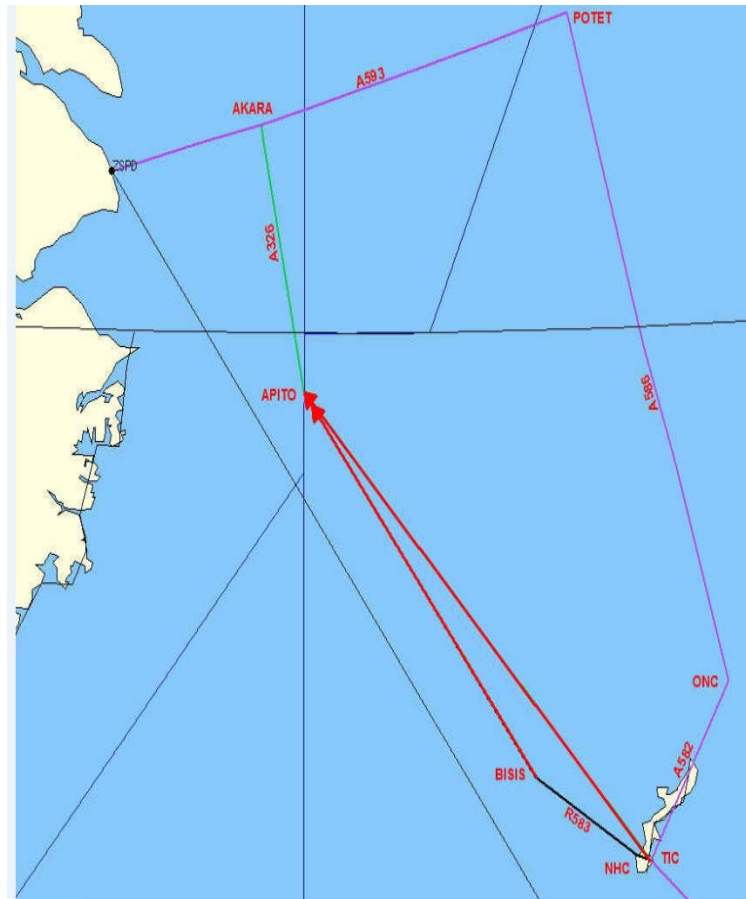
Alternative:

TIC – R583- BASIS – APITO

FLIGHT LEVEL BAND

PRIORITY:

CHART



Action Required	IATA
	ICAO

Saving	Per flight	Annual
Mileage / Time	19 mins/19 mins	
Fuel	3094kg/3021kg	kg
CO ₂	9591kg/9365	kg
No _x		

ATS ROUTE NAME: FE0008 / RDGE 15.003 / APAC RUS 5

Requested by : IATA / RUS

<p>ENTRY/EXIT POINT</p> <p>ROUTE DESCRIPTION</p> <p>Implementation of 2 bi-directional ATS routes:</p> <p>a. SIBIR – new waypoint on border Khabarovsk FIR/Fukuoka FIR – (new EKVIK waypoint)</p> <p>b. ARLAS – new waypoint on border Khabarovsk FIR/Fukuoka FIR – (new EKVIK waypoint)</p> <p>FLIGHT LEVEL BAND</p> <p>PRIORITY: HIGH/MED/LOW</p> <p>PLANNED IMPLEMENTATION DATE</p>	<p>CHART</p>
--	---------------------

Action Required	IATA
	ICAO
	Coordination Russian Federation, Japan

Saving	Per flight	Annual
Mileage / Time		
Fuel		
CO ₂		
No _x		

Remarks: improve north-south traffic flows between Khabarovsk FIR and Fukuoka FIR, Original SIBIR – LURED – EKVIK proposal will be changed due to new position of EKVIK further east as a result of the planned airspace structure change in Japan, when both new ATS routes will be implemented the existing B451 ARLAS-NATEK-LURED-IGROD will be withdrawn

Potential City Pairs:

ATS ROUTE NAME: FE0021 / RDGE 13.028 / APAC RUS 4

Requested by : IATA / RUS

<p>ENTRY/EXIT POINT</p> <p>ROUTE DESCRIPTION</p> <p>Implementation of bi-directional ATS route segment: AVGOK – GTC</p> <p>FLIGHT LEVEL BAND</p> <p>PRIORITY: HIGH/MED/LOW</p> <p>PLANNED IMPLEMENTATION DATE</p>	<p>CHART</p>
--	---------------------

Action Required	IATA
	ICAO
	Coordination Russian Federation, Japan

Saving	Per flight	Annual
Mileage / Time	13 NM	
Fuel		
CO ₂		
No _x		

Remarks: During a bi-lateral meeting between the State ATM Corporation and the JCAB Japan (in Tokyo, November 2012) a difference in coordinates of the AVGOK waypoint was identified in the aeronautical information publications of Russia and Japan. The incorrect coordinates were confirmed by Japan and a decision was made to report this issue to the appropriate Regional ICAO Offices. The Russian Federation proposes the following coordinates (4336N and 13815E) for the AVGOK waypoint

Potential City Pairs:

ATS ROUTE NAME: FE0034 / RDGE 16.027 / APAC RUS 9

Requested by : IATA / RUS

<p>ENTRY/EXIT POINT</p> <p>ROUTE DESCRIPTION</p> <p>Implementation of new bi-directional ATS route: RITEK – new waypoint 495025N 1182854E – HLD</p> <p>FLIGHT LEVEL BAND</p> <p>PRIORITY: HIGH/MED/LOW</p> <p>PLANNED IMPLEMENTATION DATE</p>	<p>CHART</p>
--	---------------------

Action Required	IATA
	ICAO Coordination Russian Federation, China

Saving	Per flight	Annual
Mileage / Time	159 NM	
Fuel		
CO ₂		
No _x		

Remarks:

Potential City Pairs:

ATS ROUTE NAME: FE0032 / RDGE 17.005

Requested by : IATA / TJK

<p>ENTRY/EXIT POINT</p> <p>ROUTE DESCRIPTION</p> <p>Implementation of new bi-directional ATS route segment: TOPAZ – SCH (Sache) or TOPAZ – HTN (Hotan)</p> <p>FLIGHT LEVEL BAND</p> <p>PRIORITY: HIGH/MED/LOW</p> <p>PLANNED IMPLEMENTATION DATE</p>	<p>CHART</p>
---	---------------------

Action Required	IATA
	ICAO Coordination China, Tajikistan

Saving	Per flight	Annual
Mileage / Time		
Fuel		
CO ₂		
No _x		

Remarks: further improve ATS route network in the interface between China and Tajikistan

Potential City Pairs:

ATS ROUTE NAME: FE0054 / RDGE 20.015

Requested by : PRK / RUS

ENTRY/EXIT POINT

ROUTE DESCRIPTION

Implementation of bi-directional ATS route RIVAT (N412900 E1321600) – GUMSU (N383800 E1302300)

FLIGHT LEVEL BAND

21000 – 53000 feet

PRIORITY: HIGH/MED/LOW

PLANNED IMPLEMENTATION DATE

11 December 2014

CHART



Action Required	IATA
	ICAO

Saving	Per flight	Annual
Mileage / Time		
Fuel		
CO ₂		
No _x		

Remarks: Khabarovsk/Vladivostok airspace re-organisation project, (in map No. 11)

Potential City Pairs:

ATS ROUTE NAME: FE0055 / RDGE 20.016

Requested by : PRK / RUS

ENTRY/EXIT POINT

ROUTE DESCRIPTION

Implementation of bi-directional ATS route NULAR (N405912 E1341100) – GUMSU (N383800 E1302300)

FLIGHT LEVEL BAND

28000 – 53000 feet

PRIORITY: HIGH/MED/LOW

PLANNED IMPLEMENTATION DATE

11 December 2014

CHART



Action Required	IATA
	ICAO

Saving	Per flight	Annual
Mileage / Time		
Fuel		
CO ₂		
No _x		

Remarks: Khabarovsk/Vladivostok airspace re-organisation project, (in map No. 12)

Potential City Pairs:

ATS ROUTE NAME: FE0022 / RDGE 13.033 / APAC RUS7

Requested by : RUS / IATA

<p>ENTRY/EXIT POINT</p> <p>ROUTE DESCRIPTION</p> <p>Implementation of bi-directional ATS route DIKUT – SANAR or DIKUT – SAMON</p> <p>FLIGHT LEVEL BAND</p> <p>PRIORITY: HIGH/MED/LOW</p> <p>PLANNED IMPLEMENTATION DATE</p>	<p>CHART</p>
--	---------------------

Action Required	IATA
	ICAO Coordination DPRK, Japan, Russian Federation

Saving	Per flight	Annual
Mileage / Time	160 NM	
Fuel		
CO ₂		
No _x		

Remarks: revised proposal for bi-directional route from BISUN – TERNI – RIVAT in combination with the Vladivostok/Khabarovsk airspace structure changes

Potential City Pairs:

ATS ROUTE NAME: FE0044 / RDGE 20.005

Requested by : PRK / RUS

ENTRY/EXIT POINT

ROUTE DESCRIPTION

Withdrawal of the ATS route segment R452:
 KICHA (N404103 E1291132) –
 SESUR (N421730 E1304130) –
 TERNI (N422213 E1314003)

FLIGHT LEVEL BAND

PRIORITY: HIGH/MED/LOW

PLANNED IMPLEMENTATION DATE
 As part of project in 2015

CHART



Action Required	IATA
	ICAO
	Coordination DPRK, Russian Federation

Saving	Per flight	Annual
Mileage / Time		
Fuel		
CO ₂		
No _x		

Remarks: Khabarovsk/Vladivostok airspace re-organisation project, (in map No. 1)

Potential City Pairs:

ATS ROUTE NAME: FE0045 / RDGE 20.006

Requested by : PRK / RUS

ENTRY/EXIT POINT

ROUTE DESCRIPTION

Withdrawal of the ATS route segment B355:
 Muraveyka (BG) (N435303 E1331511) –
 DIKUT (N432355 E1320851) –
 GAMOV (N423301 E1311303) –
 SESUR (N421730 E1304130)

FLIGHT LEVEL BAND

PRIORITY: HIGH/MED/LOW

PLANNED IMPLEMENTATION DATE
 As part of project in 2015

CHART



Action Required	IATA
	ICAO
	Coordination DPRK, Russian Federation

Saving	Per flight	Annual
Mileage / Time		
Fuel		
CO ₂		
No _x		

Remarks: Khabarovsk/Vladivostok airspace re-organisation project, (in map No. 2)

Potential City Pairs:

ATS ROUTE NAME: FE0046 / RDGE 20.007

Requested by : PRK / RUS

ENTRY/EXIT POINT

ROUTE DESCRIPTION

Withdrawal of the ATS route segment B124:
 DIKUT (N432355 E1320851) –
 VATIS (N425143 E1320851) –
 TERNI (N422213 E1314003)

FLIGHT LEVEL BAND

PRIORITY: HIGH/MED/LOW

PLANNED IMPLEMENTATION DATE
 As part of project in 2015

CHART



Action Required	IATA
	ICAO
	Coordination DPRK, Russian Federation

Saving	Per flight	Annual
Mileage / Time		
Fuel		
CO ₂		
No _x		

Remarks: Khabarovsk/Vladivostok airspace re-organisation project, (in map No. 3)

Potential City Pairs:

ATS ROUTE NAME: FE0047 / RDGE 20.008

Requested by : PRK / RUS

ENTRY/EXIT POINT

ROUTE DESCRIPTION

Withdrawal of the ATS route segment G711:
AGITA (N421937 E1321151) –
RIVAT (N412900 E1321600)

FLIGHT LEVEL BAND

PRIORITY: HIGH/MED/LOW

PLANNED IMPLEMENTATION DATE

As part of project in 2015

CHART



Action Required	IATA
	ICAO
	Coordination DPRK, Russian Federation

Saving	Per flight	Annual
Mileage / Time		
Fuel		
CO ₂		
No _x		

Remarks: Khabarovsk/Vladivostok airspace re-organisation project, (in map No. 4)

Potential City Pairs:

ATS ROUTE NAME: FE0048 / RDGE 20.009

Requested by : PRK / RUS

ENTRY/EXIT POINT

ROUTE DESCRIPTION

Withdrawal of the ATS route segment G721:
 VATIS (N425143 E1320851) –
 AGITA (N421937 E1321151) –
 RORIM (N415031 E1311639)

FLIGHT LEVEL BAND

PRIORITY: HIGH/MED/LOW

PLANNED IMPLEMENTATION DATE
 As part of project in 2015

CHART



Action Required	IATA
	ICAO
	Coordination DPRK, Russian Federation

Saving	Per flight	Annual
Mileage / Time		
Fuel		
CO ₂		
No _x		

Remarks: Khabarovsk/Vladivostok airspace re-organisation project, (in map No. 5)

Potential City Pairs:

ATS ROUTE NAME: FE0049 / RDGE 20.010

Requested by : PRK / RUS

ENTRY/EXIT POINT

ROUTE DESCRIPTION

Implementation of uni-directional eastbound ATS route segment B356:
 KICHA (N404103 E1291140) –
 new waypoint (N421230 E1304810) –
 110.6 KN Vladivostok (N432303 E1320708)

FLIGHT LEVEL BAND

17000 – 53000 feet

PRIORITY: HIGH/MED/LOW

PLANNED IMPLEMENTATION DATE

As part of project in 2015

CHART



Action Required	IATA
	ICAO
	Coordination DPRK, Russian Federation

Saving	Per flight	Annual
Mileage / Time		
Fuel		
CO ₂		
No _x		

Remarks: Khabarovsk/Vladivostok airspace re-organisation project, (in map No. 6)

Potential City Pairs:

ATS ROUTE NAME: FE0050 / RDGE 20.011

Requested by : PRK / RUS

ENTRY/EXIT POINT

ROUTE DESCRIPTION

Implementation of uni-directional westbound ATS route segment B355:
 Muraveyka (BG) (N435303 E1331511) –
 VATIS (N425143 E1320851) –
 TERNI (N422213 E1314003) –
 new waypoint (N415350 E1311255) –
 KICHA (N404106 E1291140)

FLIGHT LEVEL BAND

18000 – 51000 feet

PRIORITY: HIGH/MED/LOW

PLANNED IMPLEMENTATION DATE

As part of project in 2015

CHART



Action Required	IATA
	ICAO
	Coordination DPRK, Russian Federation

Saving	Per flight	Annual
Mileage / Time		
Fuel		
CO ₂		
No _x		

Remarks: Khabarovsk/Vladivostok airspace re-organisation project, (in map No. 7)

Potential City Pairs:

ATS ROUTE NAME: FE0051 / RDGE 20.012

Requested by : PRK / RUS

ENTRY/EXIT POINT

ROUTE DESCRIPTION

Implementation of new uni-directional eastbound ATS route segment:
GUMSU (N383800 E1302300) –
new waypoint (N421230 E1304810)

FLIGHT LEVEL BAND

29000 – 53000 feet

PRIORITY: HIGH/MED/LOW

PLANNED IMPLEMENTATION DATE

As part of project in 2015

CHART



Action Required	IATA
	ICAO
	Coordination DPRK, Russian Federation

Saving	Per flight	Annual
Mileage / Time		
Fuel		
CO ₂		
No _x		

Remarks: Khabarovsk/Vladivostok airspace re-organisation project, (in map No. 8)

Potential City Pairs:

ATS ROUTE NAME: FE0052 / RDGE 20.013

Requested by : PRK / RUS

ENTRY/EXIT POINT

ROUTE DESCRIPTION

Implementation of new uni-directional westbound ATS route segment:
new waypoint (N415350 E1311255) –
GUMSU (N383800 E1302300)

FLIGHT LEVEL BAND

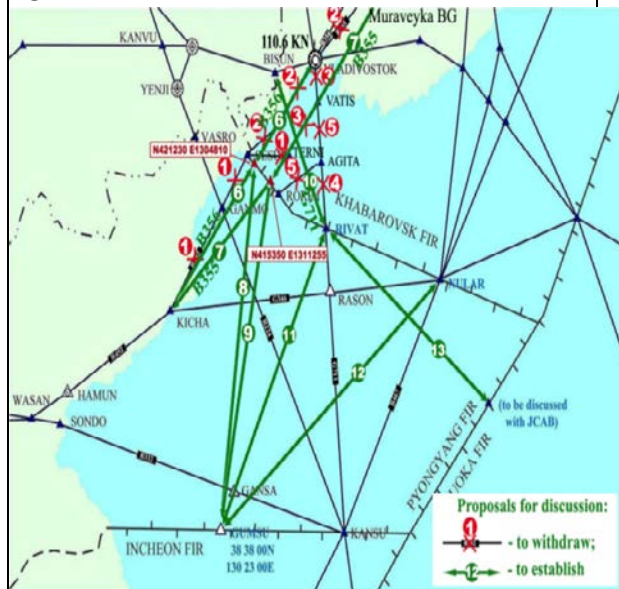
28000 – 51000 feet

PRIORITY: HIGH/MED/LOW

PLANNED IMPLEMENTATION DATE

As part of project in 2015

CHART



Action Required	IATA
	ICAO
	Coordination DPRK, Russian Federation

Saving	Per flight	Annual
Mileage / Time		
Fuel		
CO ₂		
No _x		

Remarks: Khabarovsk/Vladivostok airspace re-organisation project, (in map No. 9)

Potential City Pairs:

ATS ROUTE NAME: FE0053 / RDGE 20.014

Requested by : PRK / RUS

ENTRY/EXIT POINT

ROUTE DESCRIPTION

Implementation of bi-directional ATS route segment G711:
 BISUN (N431400 E1311148) –
 TERNI (N422213 E1314003) –
 RIVAT (N412900 E1321600)

FLIGHT LEVEL BAND

21000 – 53000 feet

PRIORITY: HIGH/MED/LOW

PLANNED IMPLEMENTATION DATE

As part of project in 2015

CHART



Action Required	IATA
	ICAO
	Coordination DPRK, Russian Federation

Saving	Per flight	Annual
Mileage / Time		
Fuel		
CO ₂		
No _x		

Remarks: Khabarovsk/Vladivostok airspace re-organisation project, (in map No. 10)

Potential City Pairs:

ATS ROUTE NAME: FE0056 / RDGE 20.017

Requested by : PRK / RUS

ENTRY/EXIT POINT

ROUTE DESCRIPTION

Implementation of new bi-directional ATS route segment:
RIVAT (N412900 E1321600) –
to new waypoint on FIR border (NXXXXXX
EXXXXXX) between Pyongyang FIR and
Fukuoka FIR

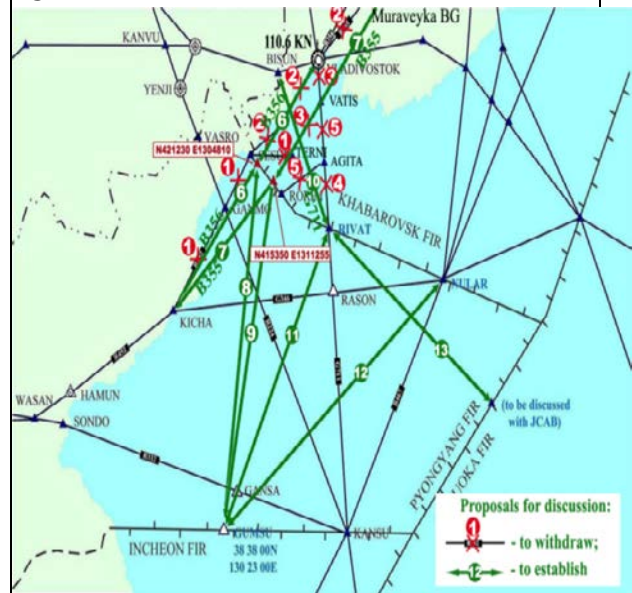
FLIGHT LEVEL BAND

PRIORITY: HIGH/MED/LOW

PLANNED IMPLEMENTATION DATE

As part of project in 2015

CHART



Action Required	IATA
	ICAO
	Coordination DPRK, Japan, Russian Federation

Saving	Per flight	Annual
Mileage / Time		
Fuel		
CO ₂		
No _x		

Remarks: Khabarovsk/Vladivostok airspace re-organisation project, (in map No. 13), for further discussion with JCAB, Japan

Potential City Pairs:

ATS ROUTE NAME: FE0031 / RDGE 16.005 / APAC RUS11

Requested by : IATA / RUS

ENTRY/EXIT POINT

ROUTE DESCRIPTION

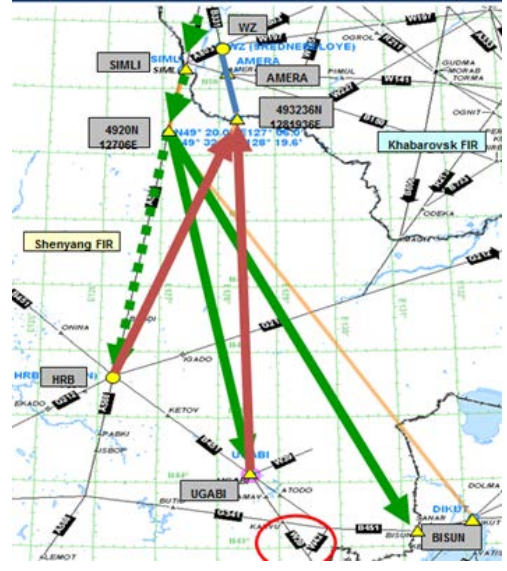
Implementation of new uni-directional eastbound
ATS route:
SIMLI –
new waypoint 4920N 12706E –
BISUN

FLIGHT LEVEL BAND

PRIORITY: HIGH/MED/LOW

PLANNED IMPLEMENTATION DATE

CHART



Action Required	IATA
	ICAO
	Coordination Russian Federation, China

Saving	Per flight	Annual
Mileage / Time	150 NM	
Fuel		
CO ₂		
No _x		

Remarks: SIMLI dualisation/reorganisation project

Potential City Pairs:

ATS ROUTE NAME: FE0030 / RDGE 18.020

Requested by : IATA / RUS

ENTRY/EXIT POINT

ROUTE DESCRIPTION

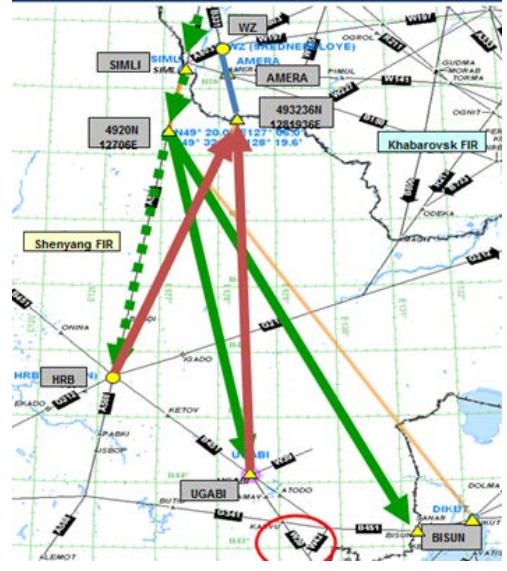
Implementation of new bi-directional ATS route segment:
 new waypoint 493236N 1281936E –
 AMERA –
 WZ (Srednebeloye)

FLIGHT LEVEL BAND

PRIORITY: HIGH/MED/LOW

PLANNED IMPLEMENTATION DATE

CHART



Action Required	IATA
	ICAO
	Coordination Russian Federation, China

Saving	Per flight	Annual
Mileage / Time		
Fuel		
CO ₂		
No _x		

Remarks: SIMLI dualisation/reorganisation project

Potential City Pairs:

ATS ROUTE NAME: FE0017 / RDGE 15.035 / APAC RUS12

Requested by : IATA / RUS

ENTRY/EXIT POINT

ROUTE DESCRIPTION

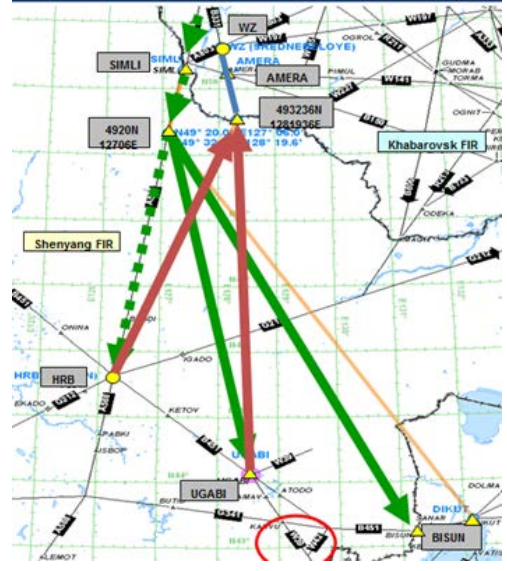
Implementation of new uni-directional westbound
ATS route segment:
WZ (Srednebeloye) –
along G494 –
SIMLI

FLIGHT LEVEL BAND

PRIORITY: HIGH/MED/LOW

PLANNED IMPLEMENTATION DATE

CHART



Action Required	IATA
	ICAO
	Coordination Russian Federation, China

Saving	Per flight	Annual
Mileage / Time		
Fuel		
CO ₂		
No _x		

Remarks: SIMLI dualisation/reorganisation project

Potential City Pairs:

ATS ROUTE NAME: FE0029 / RDGE 18.031 / APAC RUS13

Requested by : IATA / RUS

ENTRY/EXIT POINT

ROUTE DESCRIPTION

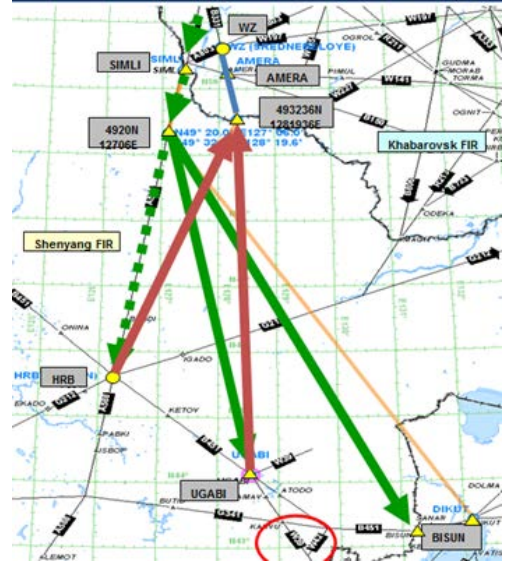
Implementation of new uni-directional eastbound
ATS route segment:
SIMLI –
new waypoint 4920N 12706E –
UGABI

FLIGHT LEVEL BAND

PRIORITY: HIGH/MED/LOW

PLANNED IMPLEMENTATION DATE

CHART



Action Required	IATA
	ICAO
	Coordination Russian Federation, China

Saving	Per flight	Annual
Mileage / Time		
Fuel		
CO ₂		
No _x		

Remarks: SIMLI dualisation/reorganisation project

Potential City Pairs:

ATS ROUTE NAME: FE0035 / RDGE 18.030 / APAC RUS15

Requested by : IATA / RUS

ENTRY/EXIT POINT

ROUTE DESCRIPTION

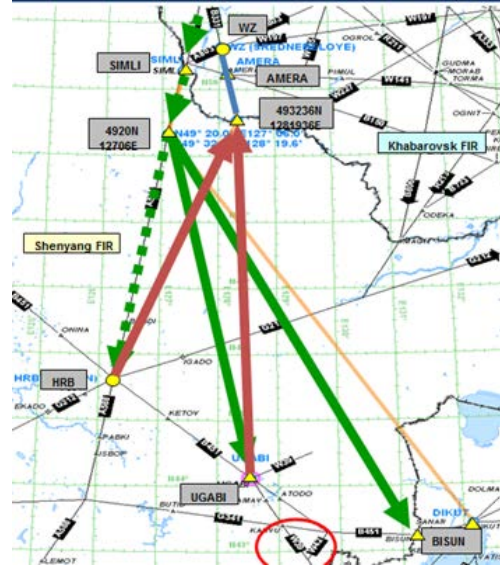
Implementation of new uni-directional westbound
ATS route segment:
UGABI –
new waypoint 493236N 1281936E –
AMERA –
WZ

FLIGHT LEVEL BAND

PRIORITY: HIGH/MED/LOW

PLANNED IMPLEMENTATION DATE

CHART



Action Required	IATA
	ICAO
	Coordination Russian Federation, China

Saving	Per flight	Annual
Mileage / Time		
Fuel		
CO ₂		
No _x		

Remarks: SIMLI dualisation/reorganisation project

Potential City Pairs:

ATS ROUTE NAME: FE0041 / RDGE 19.018

Requested by : IATA / RUS

<p>ENTRY/EXIT POINT</p> <p>ROUTE DESCRIPTION</p> <p>Implementation of 2 new uni-directional ATS route segments:</p> <p>a. eastbound unidirectional traffic via NALEB – SIMLI – HEK – 492000N 1270600E – BISUN – SANAR – ARLAS – new waypoint on FIR border – new EKVIK</p> <p>b. westbound unidirectional traffic via new EKVIK – new waypoint on FIR border – ARLAS – SANAR – BISUN – new waypoint 493236N 1281936E – AMERA – WZ – NALEB</p> <p>FLIGHT LEVEL BAND</p> <p>PRIORITY: HIGH/MED/LOW</p> <p>PLANNED IMPLEMENTATION DATE</p>	<p>CHART</p>
---	---------------------

Action Required	IATA
	ICAO
	Coordination Russian Federation, China

Saving	Per flight	Annual
Mileage / Time		
Fuel		
CO ₂		
No _x		

Remarks: SIMLI dualisation/reorganisation project, further improvement of north-south traffic flows between Khabarovsk FIR and Fukuoka FIR, alternative proposal to APAC RUS6,

Potential City Pairs:

ATS ROUTE NAME: RUS 3

Requested by : IATA

<p>ENTRY/EXIT POINT XXXXX</p> <p>ROUTE DESCRIPTION Muraveyka (BG) .. TELOD .. XXXXX .. Gangwon (KAE)</p> <p>FLIGHT LEVEL BAND 28000 – 46000 feet</p> <p>PRIORITY: HIGH/MED/LOW</p> <p>“XXXXX” Approx N38 38.0 E129 24.7</p>	<p>CHART</p>
---	---------------------

Action Required	IATA
	ICAO

Saving	Per flight	Annual
Mileage / Time		
Fuel		
CO ₂		
No _x		

Remarks

Potential City Pairs: North America- Inchoen

ATS ROUTE NAME: RUS 4
REQUESTED BY: IATA

<p>ENTRY/EXIT POINT</p> <p>ROUTE DESCRIPTION</p> <p>AVGOK-GTC</p> <p>FLIGHT LEVEL BAND</p> <p>PRIORITY:</p> <p>States concerned</p> <p>JAPAN RUSSIAN FEDERATION</p>	<p>CHART</p>
---	---------------------

Action Required	IATA
	ICAO

Saving	Per flight	Annual
Mileage / Time		
Fuel		
CO ₂		
No _x		

Russian Federation: Further discussion with Japan required through the ICAO APAC Office.

Objective:
To reduce route distance of 13 NM as compared to current routing AVGOK-KADBO-RJSN.

ATS ROUTE NAME: RUS 5
REQUESTED BY: IATA /RUSSIA

ENTRY/EXIT POINT

ROUTE DESCRIPTION

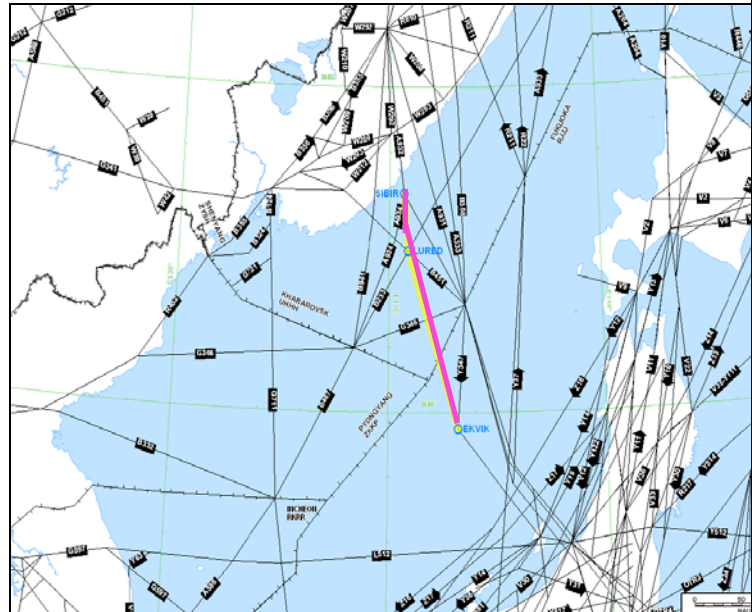
bidirectional ATS route SIBIR –
 LURED – EKVIK.
FLIGHT LEVEL BAND

PRIORITY:

States concerned

JAPAN
 RUSSIAN FEDERATION

CHART



Action Required	IATA
	ICAO


Saving	Per flight	Annual
Mileage / Time		
Fuel		
CO ₂		
No _x		

*Russian Federation: New waypoint needed 404751N1361021E (FIR Boundary), coordination with Japan (Fukuoka FIR) required.
 Alternative bi-directional route to EN15. Implementation planned for 2Q 2013.*

Objective:

To improve north-south traffic flows between Khabarovsk FIR and Fukuoka FIR.

ATS ROUTE NAME: CHA13
REQUESTED BY: IATA

<p>ENTRY/EXIT POINT</p> <p>ROUTE DESCRIPTION FLIGHT LEVEL BAND GM PIDOX- DBL. PRIORITY:</p> <p>States concerned</p> <p>CHINA</p>	<p>CHART</p> 
---	---

Action Required	IATA
	ICAO

Saving	Per flight	Annual
Mileage / Time		
Fuel		
CO ₂		
No _x		

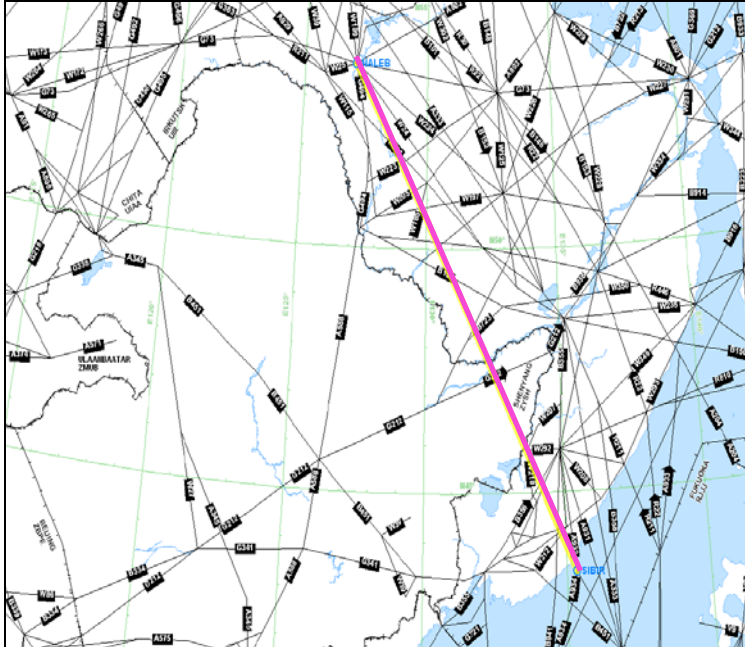
Part of IATA EUR-North Asia package - #EN13.

China: Further discussions required via ICAO APAC Office.

Objective:

To reduce route distance of 67 NM as compared to current routing GM-LADIX-MAKNO.

ATS ROUTE NAME: *RUS 6*
REQUESTED BY: IATA

ENTRY/EXIT POINT	CHART
<p>ROUTE DESCRIPTION FLIGHT LEVEL BAND NALEB - SIBIR. PRIORITY:</p> <p>States concerned</p> <p>CHINA RUSSIAN FEDERATION</p>	

Action Required	IATA
	ICAO

Saving	Per flight	Annual
Mileage / Time		
Fuel		
CO ₂		
No _x		

Part of IATA EUR-North Asia package - #EN6.

Objective:

To reduce route distance of 63 NM as compared to current routing LALIR-SOVIK-HAB-TD-SIBIR.

ATS ROUTE NAME: RUS 7
REQUESTED BY: IATA

ENTRY/EXIT POINT

ROUTE DESCRIPTION
 ATS route segment **DIKUT**
 or **SANAR - SAMON**.

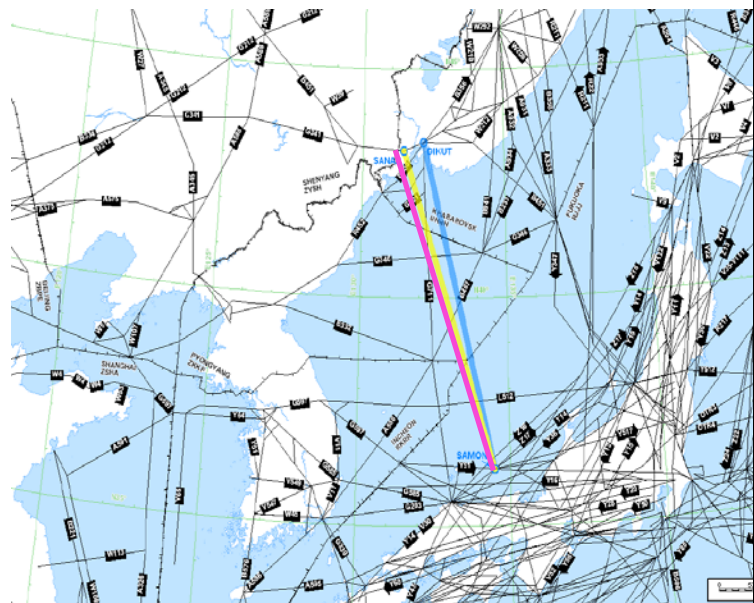
FLIGHT LEVEL BAND

PRIORITY:

States concerned

JAPAN
 RUSSIAN FEDERATION
 DEM. PEOPLE'S REP. OF KOREA

CHART



Action Required	IATA
	ICAO

Saving	Per flight	Annual
Mileage / Time		
Fuel		
CO ₂		
No _x		

Part of IATA EUR-North Asia package - #EN9.

Russian Federation: Further discussion/studies required. Difficult to implement.

Objective:

To reduce route distance of 160 NM as compared to current routing DIKUT-KANSU-JEC.

ATS ROUTE NAME: RUS 8
REQUESTED BY: IATA

ENTRY/EXIT POINT

ROUTE DESCRIPTION
 KANSU - TOMMY.

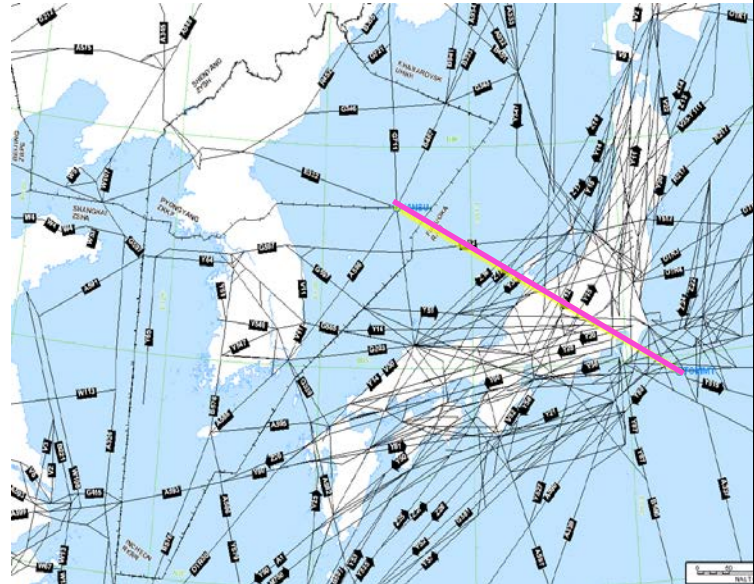
FLIGHT LEVEL BAND

PRIORITY:

States concerned

KOREA
 JAPAN

CHART



Action Required	IATA
	ICAO

Saving	Per flight	Annual
Mileage / Time		
Fuel		
CO ₂		
No _x		

Part of IATA EUR-North Asia package - #EN14.

China: Further discussion between China and Korea also required via ICAO APAC Office.

Objective:

To reduce route distance of 64 NM as compared to current routing KANSU-IGRAS-TOMMY.

ATS ROUTE NAME: RUS 9
REQUESTED BY: IATA/RUSSIA

ENTRY/EXIT POINT

ROUTE DESCRIPTION

**RITEK- new waypoint 495025N
 1182854E - HLD**

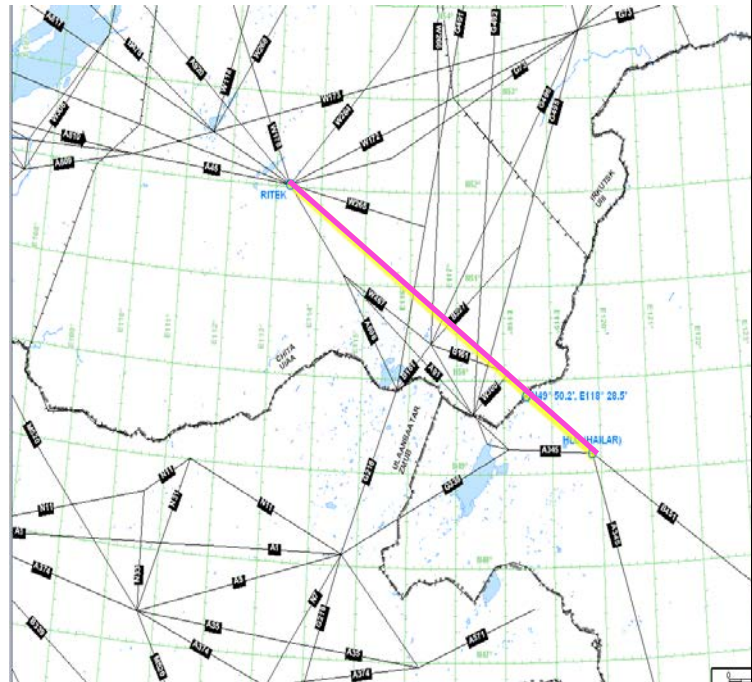
FLIGHT LEVEL BAND

PRIORITY:

States concerned

CHINA
 RUSSIAN FEDERATION

CHART



Action Required	IATA
	ICAO

Saving	Per flight	Annual
Mileage / Time		
Fuel		
CO ₂		
No _x		

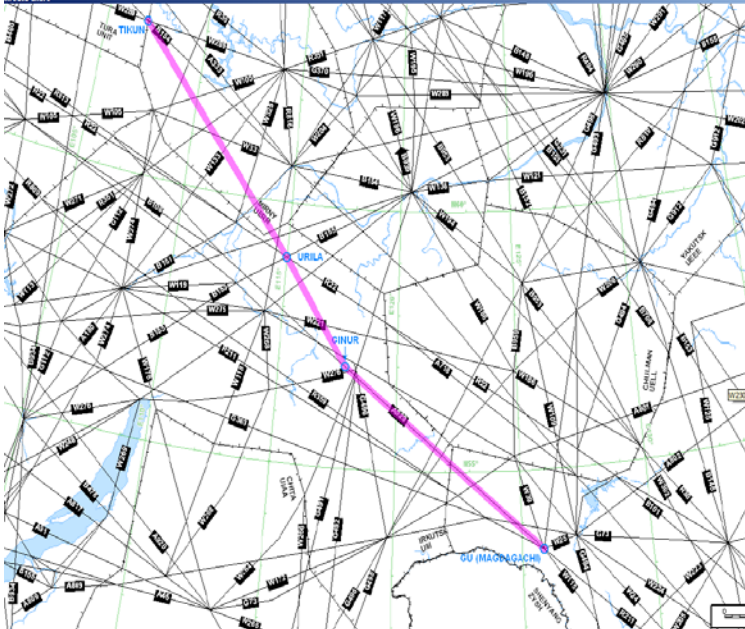
Further studies/coordination required. Updates will be given when available.

Alternative uni-directional eastbound route proposal for EN11, proposal 13.035 (deleted from catalogue).

Objective:

To reduce route distance of 159 NM as compared to current routing PTG-RITEK-HLD-DIKUT-KANSU

ATS ROUTE NAME: *RUS 10*
REQUESTED BY: IATA/RUSSIA

ENTRY/EXIT POINT	CHART
<p>ROUTE DESCRIPTION</p> <p>TIKUN - URILA - GINUR - GU.</p> <p>FLIGHT LEVEL BAND</p> <p>PRIORITY:</p> <p>States concerned</p> <p>CHINA RUSSIAN FEDERATION</p>	

Action Required	IATA
	ICAO

Saving	Per flight	Annual
Mileage / Time		
Fuel		
CO ₂		
No _x		

Part of IATA EUR-North Asia package - #EN10.

China: Proposal can partly be withdrawn due to lack of CNS capabilities for the segment URILA-492000N1270600E. Alternative proposal made.

Russian Federation: Further studies/discussion required.

Objective:
To reduce route distance of 150 NM as compared to current routing TIKUN-IVADA-TD-DIKUT.

ATS ROUTE NAME: *RUS 11*
REQUESTED BY: IATA/RUSSIA

<p>ENTRY/EXIT POINT</p> <p>ROUTE DESCRIPTION SIMLI - new waypoint 49200N 1270600E - DIKUT.</p> <p>FLIGHT LEVEL BAND</p> <p>PRIORITY:</p> <p>States concerned</p> <p>CHINA RUSSIAN FEDERATION</p>	<p>CHART</p>
--	---------------------

Action Required	IATA
	ICAO

Saving	Per flight	Annual
Mileage / Time		
Fuel		
CO ₂		
No _x		

Further studies/coordination required. Updates will be given when available.

Objective:
To reduce route distance of 150 NM as compared to current routing TIKUN-IVADA-TD-DIKUT.

ATS ROUTE NAME: RUS 12
REQUESTED BY: IATA/RUSSIA

ENTRY/EXIT POINT

ROUTE DESCRIPTION

Unidirectional Westbound
 route HRB - 493236N 1281936E -
 AMERA – WZ

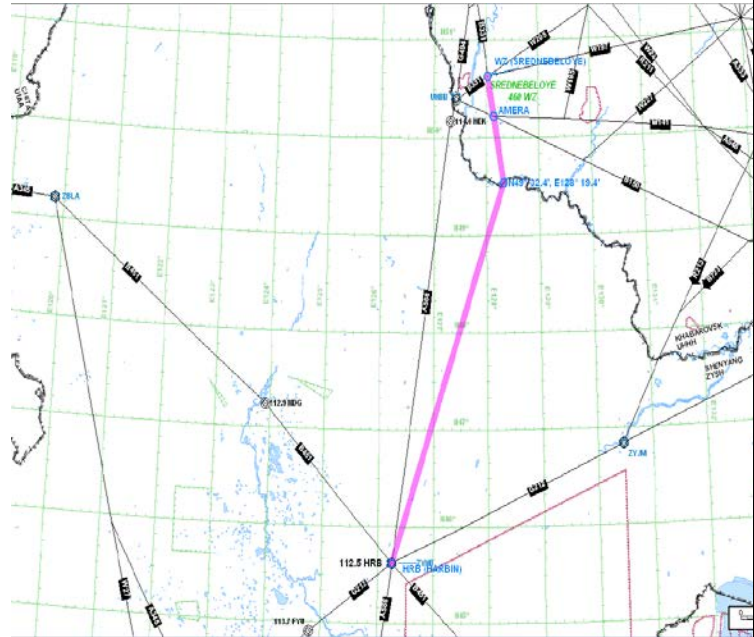
FLIGHT LEVEL BAND

PRIORITY:

States concerned

CHINA
 DEM. PEOPLE'S REP. OF KOREA
 RUSSIAN FEDERATION

CHART



Action Required	IATA
	ICAO

Saving	Per flight	Annual
Mileage / Time		
Fuel		
CO ₂		
No _x		

Russian Federation: westbound ATS route is needed for unloading traffic from SIMLI

ATS ROUTE NAME: *RUS 13*
REQUESTED BY: IATA/RUSSIA

ENTRY/EXIT POINT

ROUTE DESCRIPTION

unidirectional Eastbound
 route **SIMLI - HEK - 492000N
 12706E - LEPNI - 422624.7N
 1294454.7E - KANSU**

FLIGHT LEVEL BAND

PRIORITY:

States concerned

CHINA
 DEM. PEOPLE'S REP. OF KOREA
 RUSSIAN FEDERATION

CHART



Action Required	IATA
	ICAO

Saving	Per flight	Annual
Mileage / Time		
Fuel		
CO ₂		
No _x		

*Russian Federation: eastbound ATS route is needed for unloading traffic from SIMLI.
 China: Confirmation of interest in this ATS route but further studies/coordination are needed, updates will be given when available.*

ATS ROUTE NAME: RUS 14
REQUESTED BY: IATA/RUSSIA

ENTRY/EXIT POINT

ROUTE DESCRIPTION

FLIGHT LEVEL BAND

PRIORITY:

States concerned CHINA
 DEM. PEOPLE'S REP. OF KOREA
 RUSSIAN FEDERATION

CHART



Action Required	IATA
	ICAO

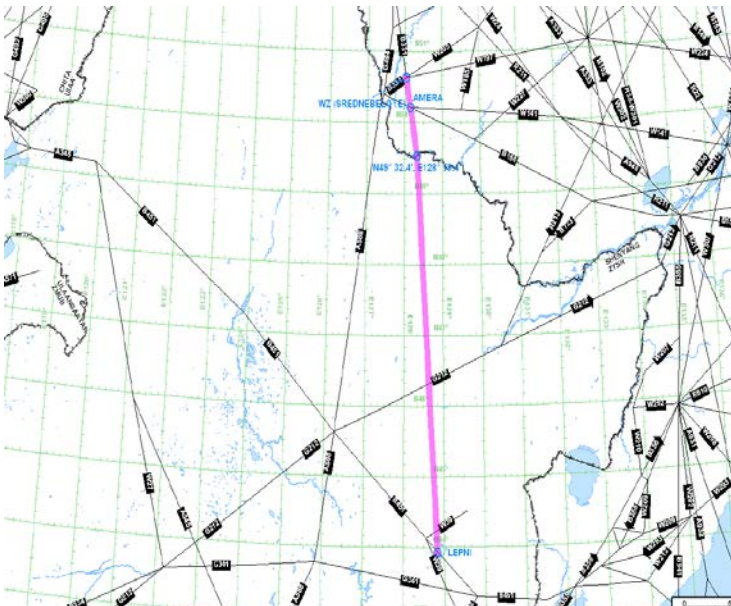
	Per flight	Annual
Saving Mileage / Time		
Fuel		
CO ₂		
No _x		

Alternative bi-directional route

Objective:

To reduce route distance of 159 NM as compared to current routing PTG-RITEK-HLD-DIKUT-KANSU.

ATS ROUTE NAME: *RUS 15*
REQUESTED BY: IATA/RUSSIA

ENTRY/EXIT POINT	CHART
<p>ROUTE DESCRIPTION Westbound ATS route LEPNI 435542N 1285030E - new waypoint 493236N</p> <p>FLIGHT LEVEL BAND</p> <p>PRIORITY:</p> <p>States concerned</p> <p>CHINA RUSSIAN FEDERATION</p>	

Action Required	IATA
	ICAO

Saving	Per flight	Annual
Mileage / Time		
Fuel		
CO ₂		
No _x		

Further studies/coordination required. Updates will be given

Chapter 4: Pacific

(referred to: IPACG, ISPACG as appropriate for review)

ATS ROUTES	SIGNIFICANT PTS	COORDINATES	FIR	REMARKS
WPC 1	PY VNO ROR ENDAX ELMAS TINHO	S0927.2 E14712.9 S0240.7 E14118.2 N0722.1 E13433.0 N1415.0 E13000.0 N2027.0 E12500.0 N2421.2 E12201.7	PT MORESBY PT MORESBY OAKLAND MANILA MANILA TAIPEI	
R582	KRILL MAITO Tahiti PAERE TOLAB TAMUR TIERE TARAO TUNBA TIAMU	2016.1N 15700.0E 1732.8S 14936.1E 1625.0S 14752.6W 1428.0S 14500.0W 1104.0S 14000.0W	Auckland Ocn/Tahiti Tahiti Tahiti Tahiti Tahiti Tahiti Tahiti Tahiti Tahiti	Moved from Chapter 4. Route Requested by Tahiti